



The **MPA** guide to  
postgraduate numbers  
at Monash University, 2010

Published September 2011

---

*The MPA guide to  
postgraduate numbers  
at Monash University.*

*The statistical data used to make the following conclusions are derived from the Monash University Planning and Statistics Unit full year student enrolment data, as at 18 July 2011, 15 June 2010 and 5 May 2009, and can be found at <http://www.opq.monash.edu.au/us/pivot-table/index.html>*

*Unless otherwise indicated, the figures refer to University-wide postgraduate numbers.*

# Contents

Key:.....	4
Executive summary .....	5
Student numbers .....	5
Faculty .....	5
Course level.....	6
Commencing & returning.....	6
Age .....	6
International students .....	6
Sex .....	6
Aboriginal and Torres Strait Islander.....	7
Funding source.....	7
Attendance type .....	7
Attendance mode .....	7
Student course attempt location.....	7
Equity groups .....	7
Campus .....	8
Faculty .....	10
Course level.....	14
Commencing & returning student status.....	15
Age of postgraduates.....	18
International postgraduates .....	20
Sex.....	26
Australian Aboriginal & Torres Strait Islander (ATSI) postgraduate enrolments .....	28
Funding source .....	31
Attendance type.....	32
Attendance mode.....	34
Student course attempt location .....	36
Equity groups.....	37

## Key:

<b>HDR</b>	Higher degree by research refers to PhD including Professional Doctorates, and Masters by Research
<b>GPG</b>	Graduate postgraduate refers to the following degrees; Masters by Coursework, Postgraduate qualifying/preliminary, Graduate Diploma New/Extended Skills and Graduate Certificate.
<b>Masters by Research</b>	Masters degree with a 66% or more research component.
<b>Masters by Coursework</b>	Masters degree with a less than 66% research component.
<b>Full-time</b>	Full-time enrolment
<b>Part-time</b>	Part-time enrolment
<b>Internal</b>	a course enrolment pattern in which all units of study are undertaken through attendance at the institution on a regular basis.
<b>External</b>	a course enrolment pattern in which all units of study involve special arrangements whereby lesson materials, assignments, etc. are delivered to the student, and any associated attendance at the institution is of an incidental, irregular, special or voluntary nature.
<b>Multi-Modal</b>	a course enrolment pattern in which at least one unit of study is undertaken by internal mode and at least one unit of study is undertaken by external mode of attendance.
<b>RTS</b>	Research Training Scheme
<b>CSP</b>	Commonwealth Supported Place
<b>International</b>	Overseas/ International postgraduate
<b>Domestic</b>	Domestic/ Local postgraduate
<b>T&amp;R</b>	Teaching and Research
<b>NESB</b>	Non-English Speaking Background
<b>Low SES</b>	Low socio-economic status as defined by ABS, Australian
<b>Student course attempt location</b>	Student course attempt location is the location, typically the campus, from where the student's course is offered. It may be interpreted as the location where a student is enrolled in a course.

Note: non-award student numbers have been excluded

# Executive summary

## Student numbers

During 2010, there were 61,854 students enrolled at Monash University and of these 17,022 (28%) were postgraduate.

The Clayton campus had the highest number of postgraduate enrolments in 2010 with 7,843 postgraduates, compared to 6,103 postgraduates at Caulfield campus and 1,295 postgraduates at Gippsland campus. There were 17 postgraduates enrolled at Berwick campus and 28 at South Africa campus.

### Total number of students at Monash University by campus, 2010

	Clayton	Caulfield	Peninsula	Gippsland	Parkville	Berwick	Sunway	South Africa	Total
Postgraduate	7843	6103	868	1295	618	17	250	28	<b>17022</b>
Undergraduate	19549	8369	3445	2962	1056	1991	5097	2363	<b>44832</b>
<b>Total</b>	<b>27392</b>	<b>14472</b>	<b>4313</b>	<b>4257</b>	<b>1674</b>	<b>2008</b>	<b>5347</b>	<b>2391</b>	<b>61854</b>

Source: Monash University Planning and Statistics, as at 18 July 2011

## Faculty

The Faculty of Business and Economics had the highest number of postgraduates in 2010 with 4327 students, followed by the Faculty of Medicine, Nursing and Health Sciences with 3635 postgraduates and then the Faculty of Education with an enrolment of 3042 postgraduates.

### Postgraduate numbers by faculty, 2010

Faculty	Total
Art and Design	<b>468</b>
Arts	<b>1678</b>
Business and Economics	<b>4327</b>
Education	<b>3042</b>
Engineering	<b>862</b>
Information Technology	<b>1085</b>
Law	<b>812</b>
Medicine, Nursing and Health Sciences	<b>3635</b>
Pharmacy and Pharmaceutical Sciences	<b>618</b>
Science	<b>474</b>
T&R	<b>21</b>
<b>Total</b>	<b>17022</b>

Source: Monash University Planning and Statistics, as at 18 July 2011

## Course level

The number of GPGs was more than three times as many as HDRs.

### Postgraduate numbers by course type, 2010

	Higher degree by research	Graduate/postgraduate	Total
Postgraduate Numbers	4211	12 811	<b>17022</b>

Source: Monash University Planning and Statistics, as at 18 July 2011

## Commencing & returning

Of the 4,211 HDRs, 27% were commencing in 2010, while GPG numbers were fairly evenly divided between commencing and returning.

### Postgraduate numbers by commencing and returning, 2010

	Commencing	Returning	Total
Higher degree by research	1145	3066	<b>4211</b>
Graduate/postgraduate	6124	6687	<b>12811</b>

Source: Monash University Planning and Statistics, as at 18 July 2011

## Age

While the average age of postgraduates in 2010 was 32 years, the largest proportion (29%) of HDR postgraduates were in the age range of 25 to 29 years. Of the GPGs, 31% were in the age range of 20 to 24 years. In 2010 the youngest GPG was 19 years old and there were two HDRs aged 83 and 84.

## International students

International postgraduates made up 30% of the HDR population and 33% of the GPG population. The largest number of international postgraduates were enrolled in the Faculty of Business and Economics where international postgraduates exceeded the number of domestic postgraduates.

### Postgraduate numbers by international/domestic, 2010

	International	Domestic	Total
Higher degree by research	1246	2965	<b>4211</b>
Graduate/postgraduate	4194	8617	<b>12811</b>

Source: Monash University Planning and Statistics, as at 18 July 2011

## Sex

There were substantially more female postgraduates than male postgraduates in both HDR and OPG during 2010. Female postgraduates comprised 60% of the total postgraduate population.

### Postgraduate numbers by sex, 2010

Sex	Female	Male	Total
Higher degree by research	2280	1931	<b>4211</b>
Graduate/postgraduate	7901	4910	<b>12811</b>

Source: Monash University Planning and Statistics, as at 18 July 2011

## Aboriginal and Torres Strait Islander

There were 39 Aboriginal and Torres Strait Islander (ATSI) postgraduates enrolled at Monash in 2010 and this figure was divided almost equally between HDR and GPG. While the Faculty of Education had 11 ATSI students, neither the Faculty of Engineering nor the Faculty of Pharmacy and Pharmaceutical Sciences had postgraduates identified as Aboriginal or Torres Strait Islander in 2010.

## Funding source

While the majority of HDRs (2,744) were supported by Research Training Scheme funds there were 1,246 international fee-paying HDRs. Of the 12,811 GPGs, 4052 held Commonwealth Supported Places (CSP), 4,201 were international full-fee paying students and 4,558 were domestic full-fee paying students.

## Attendance type

In 2010 more than twice as many HDRs were studying full-time as opposed to part-time; however, more GPGs were studying part-time rather than full-time.

### Postgraduate numbers by attendance type, 2010

Attendance Type	Full-time	Part-time	Total
Higher degree by research	2870	1341	4211
Graduate/postgraduate	5774	7037	12811

Source: Monash University Planning and Statistics, as at 18 July 2011

## Attendance mode

The majority (92%) of HDRs and 58% of GPGs were enrolled internally. A substantial proportion (34%) of GPGs were also enrolled externally.

### Postgraduate numbers by attendance mode, 2010

Attendance Mode	Internal	External	Multi-modal	Total
Higher degree by research	3858	314	39	4211
Graduate/postgraduate	7427	4412	972	12811

Source: Monash University Planning and Statistics, as at 18 July 2011

## Student course attempt location

The Faculties of Law and Medicine, Nursing and Health Sciences have postgraduates based at locations other than the main Monash campuses. Eighty-six percent of Law postgraduates were based in the city while 11% of postgraduates from the Medicine, Nursing and Health Sciences Faculty were based at various locations around Victoria, including hospitals and research centres.

## Equity groups

Equity statistics are based on domestic postgraduates only. Of domestic postgraduates, 3.5% identified themselves as having a disability, 10% of domestic postgraduates were from a non-English speaking background and another 10% of the domestic postgraduates were from a low socio-economic status.

# Campus

In 2010, 28% of students at Monash were postgraduate.

The percentage of students at each campus that were postgraduate in 2010 was:

- 29% of students at Clayton
- 42% of students at Caulfield
- 20% of students at Peninsula
- 30% of students at Gippsland
- 37% of students at Parkville
- 1% of students at Berwick
- 5% of students at Sunway
- 1% of students at South Africa

## Total number of students at Monash University by campus for 2010, 2009 and 2008

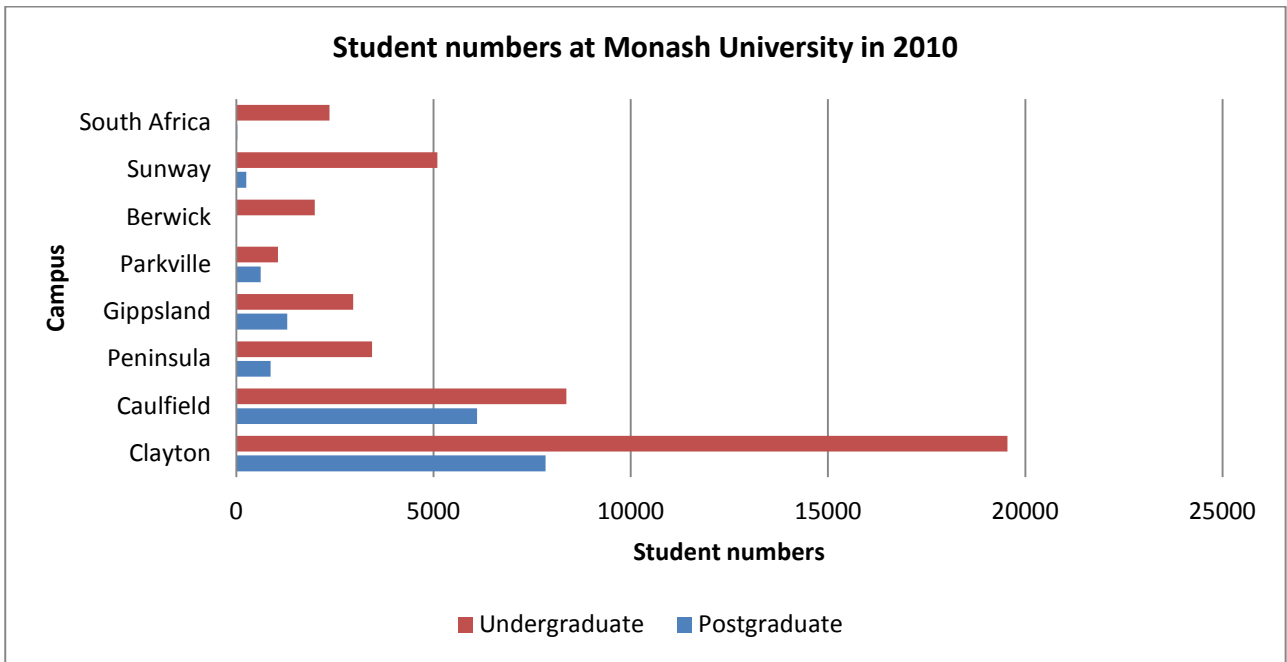
	Clayton	Caulfield	Peninsula	Gippsland	Parkville	Berwick	Sunway	South Africa	Total
<b>2010</b>									
Postgraduate	7843	6103	868	1295	618	17	250	28	<b>17022</b>
Undergraduate	19549	8369	3445	2962	1056	1991	5097	2363	<b>44832</b>
Total	27392	14472	4313	4257	1674	2008	5347	2391	<b>61854</b>
<b>2009</b>									
Postgraduate	7522	6196	772	1325	520	19	183	1	<b>16538</b>
Undergraduate	18916	7959	3098	3065	1064	1970	4606	2042	<b>42720</b>
Total	26438	14155	3870	4390	1584	1989	4789	2043	<b>59258</b>
<b>2008</b>									
Postgraduate	7172	5978	663	1351	430	20	124	3	<b>15741</b>
Undergraduate	18243	7138	2752	3415	1038	1827	4171	1470	<b>40054</b>
Total	25415	13116	3415	4766	1468	1847	4295	1473	<b>55795</b>

Source: Monash University Planning and Statistics, as at 18 July 2011, 15 June 2010 and 5 May 2009.

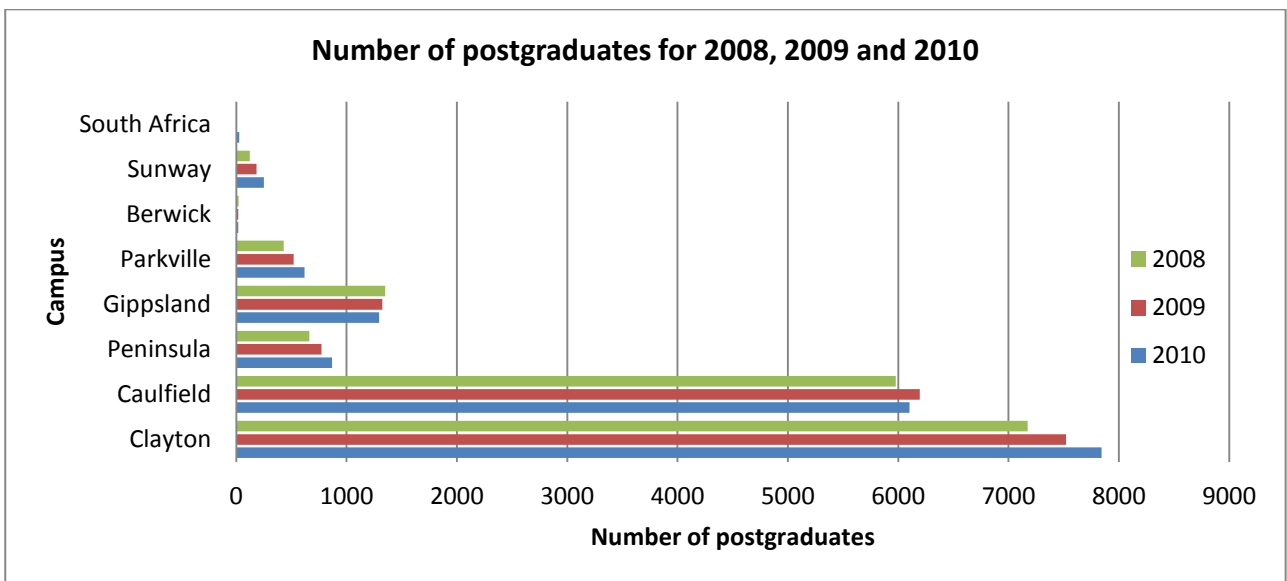
The highest number (7843) of postgraduates were enrolled at the Clayton campus while the largest proportion (42%) of postgraduates at a given campus were enrolled at Caulfield campus. The majority of students at South Africa, Sunway and Berwick were undergraduates.

Approximately one third of the student populations at both Gippsland and Parkville campuses were postgraduate.





Between 2008 and 2010 the overall number of postgraduates at Monash University increased. While there were slight increases in numbers at Clayton, Peninsula and Parkville campuses, Gippsland postgraduate numbers declined. The number of postgraduates at Sunway doubled from 2008 to 2010 and at the South African campus increased from 3 to 28.



# Faculty

In 2010:

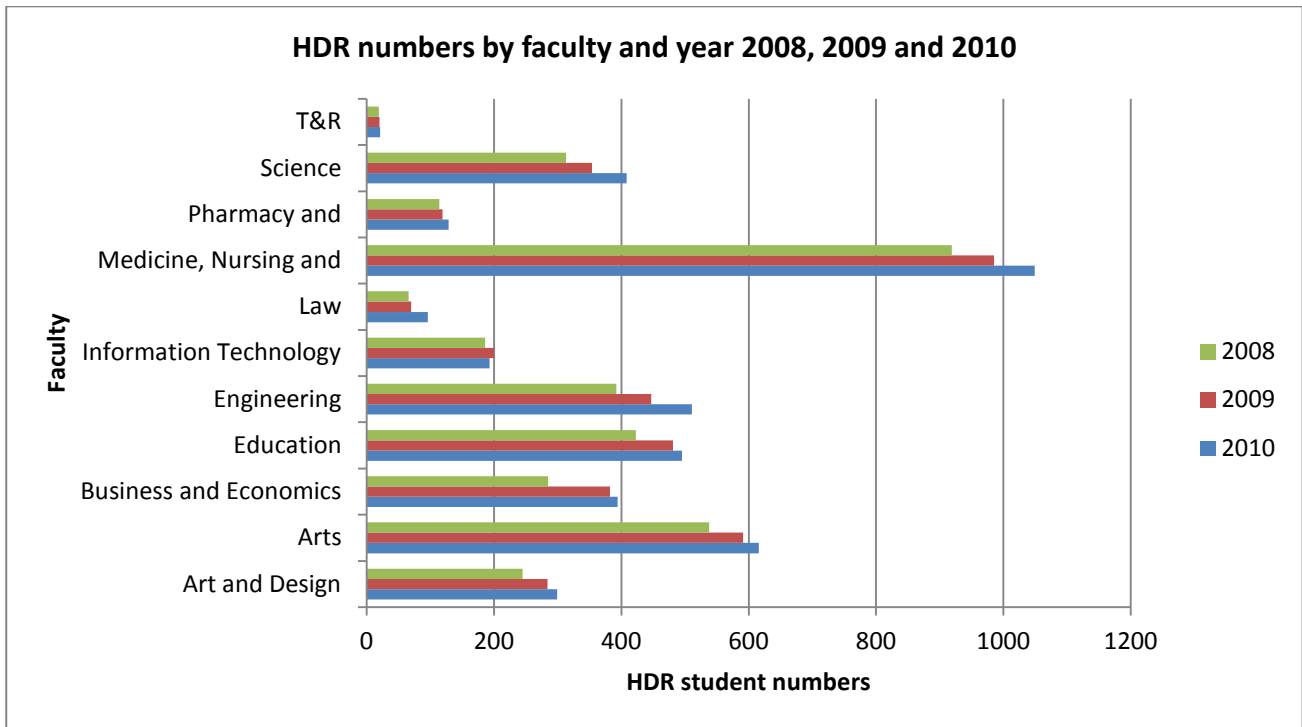
- 25% of postgraduates were enrolled through the Faculty of Business and Economics
- 21% of postgraduates were enrolled through the Faculty of Medicine, Nursing and Health Sciences
- 18% of postgraduates were enrolled through the Faculty of Education

## Postgraduate numbers by faculty by course type for 2010, 2009 and 2008

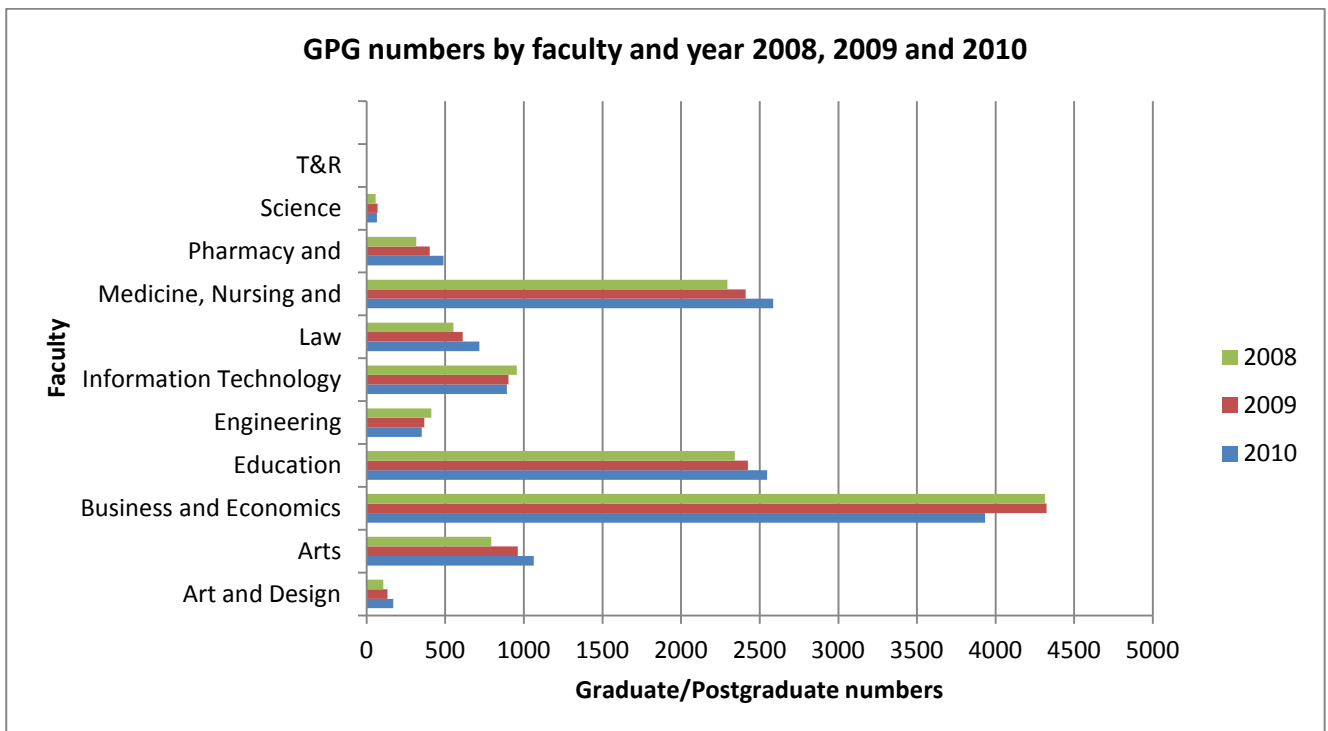
Faculty		Higher degree research	Graduate postgraduate	Total
Art and Design	2010	299	169	<b>468</b>
	2009	284	133	<b>417</b>
	2008	245	106	<b>351</b>
Arts	2010	616	1062	<b>1678</b>
	2009	591	961	<b>1552</b>
	2008	538	793	<b>1331</b>
Business and Economics	2010	394	3933	<b>4327</b>
	2009	382	4324	<b>4706</b>
	2008	385	4313	<b>4698</b>
Education	2010	495	2547	<b>3042</b>
	2009	481	2425	<b>2906</b>
	2008	423	2342	<b>2765</b>
Engineering	2010	511	351	<b>862</b>
	2009	447	367	<b>814</b>
	2008	392	411	<b>803</b>
Information Technology	2010	193	892	<b>1085</b>
	2009	200	902	<b>1102</b>
	2008	186	956	<b>1142</b>
Law	2010	96	716	<b>812</b>
	2009	70	612	<b>682</b>
	2008	66	552	<b>618</b>
Medicine, Nursing and Health Sciences	2010	1049	2586	<b>3635</b>
	2009	985	2411	<b>3396</b>
	2008	919	2294	<b>3213</b>
Pharmacy and Pharmaceutical Sciences	2010	129	489	<b>618</b>
	2009	119	401	<b>520</b>
	2008	114	316	<b>430</b>
Science	2010	408	66	<b>474</b>
	2009	354	69	<b>423</b>
	2008	313	58	<b>371</b>
T&R	2010	21	0	<b>21</b>
	2009	20	0	<b>20</b>
	2008	19	0	<b>19</b>

Source: Monash University Planning and Statistics, as at 18 July 2011, 15 June 2010 and 5 May 2009.

HDRs increased in small numbers in each faculty over the past three years except in the Faculty of Information Technology.



From 2008-2010 the Faculty of Business and Economics had the highest number of GPGs. Overall, from 2008-2010 the number of GPGs decreased in the Faculties of Information Technology, Engineering and Business and Economics.



Business and Economics postgraduates formed 62% of the postgraduate population at Caulfield, 50% at Sunway and 70% at Berwick.

The Faculty of Medicine, Nursing and Health Sciences had the majority of their postgraduates located at Clayton campus (2,302) with smaller numbers at Caulfield (575), Peninsula (485) and Gippsland (243).

#### Postgraduate numbers by faculty by campus, 2010

	Clayton	Caulfield	Peninsula	Gippsland	Parkville	Berwick	Sunway	South Africa	Total
Art and Design		416		52					<b>468</b>
Arts	1140	450		70		1	11	6	<b>1678</b>
Business and Economics	209	3804	3	150		12	127	22	<b>4327</b>
Education	2203		380	458			1		<b>3042</b>
Engineering	674			157			31		<b>862</b>
Information Technology	90	858		113		4	20		<b>1085</b>
Law	812								<b>812</b>
Medicine	2302	575	485	243			30		<b>3635</b>
Pharmacy					618				<b>618</b>
Science	393			52			29		<b>474</b>
T&R	20						1		<b>21</b>
<b>Total</b>	<b>7843</b>	<b>6103</b>	<b>868</b>	<b>1295</b>	<b>618</b>	<b>17</b>	<b>250</b>	<b>28</b>	<b>17022</b>

Source: Monash University Planning and Statistics, as at 18 July 2011

#### HDR Postgraduate numbers by faculty by campus, 2010

	Clayton	Caulfield	Peninsula	Gippsland	Parkville	Berwick	Sunway	South Africa	Total
Art and Design		289		10					<b>299</b>
Arts	480	99		22		1	8	6	<b>616</b>
Business and Economics	129	212	1	12		12	28		<b>394</b>
Education	362		95	38					<b>495</b>
Engineering	480						31		<b>511</b>
Information Technology	60	72		37		4	20		<b>193</b>
Law	96								<b>96</b>
Medicine	864	90	47	18			30		<b>1049</b>
Pharmacy					129				<b>129</b>
Science	350			29			29		<b>408</b>
T&R	20						1		<b>21</b>
<b>Total</b>	<b>2841</b>	<b>762</b>	<b>143</b>	<b>166</b>	<b>129</b>	<b>17</b>	<b>147</b>	<b>6</b>	<b>4211</b>

Source: Monash University Planning and Statistics, as at 18 July 2011

## GPG Postgraduate numbers by faculty by campus, 2010

	Clayton	Caulfield	Peninsula	Gippsland	Parkville	Berwick	Sunway	South Africa	Total
Art and Design		127		42					169
Arts	660	351		48			3		1062
Business and Economics	80	3592	2	138			99	22	3933
Education	1841		285	420			1		2547
Engineering	194			157					351
Information Technology	30	786		76					892
Law	716								716
Medicine	1438	485	438	225					2586
Pharmacy						489			489
Science	43			23					66
T&R									
<b>Total</b>	<b>5002</b>	<b>5341</b>	<b>725</b>	<b>1129</b>	<b>489</b>		<b>103</b>	<b>22</b>	<b>12811</b>

Source: Monash University Planning and Statistics, as at 18 July 2011

# Course level

In 2010:

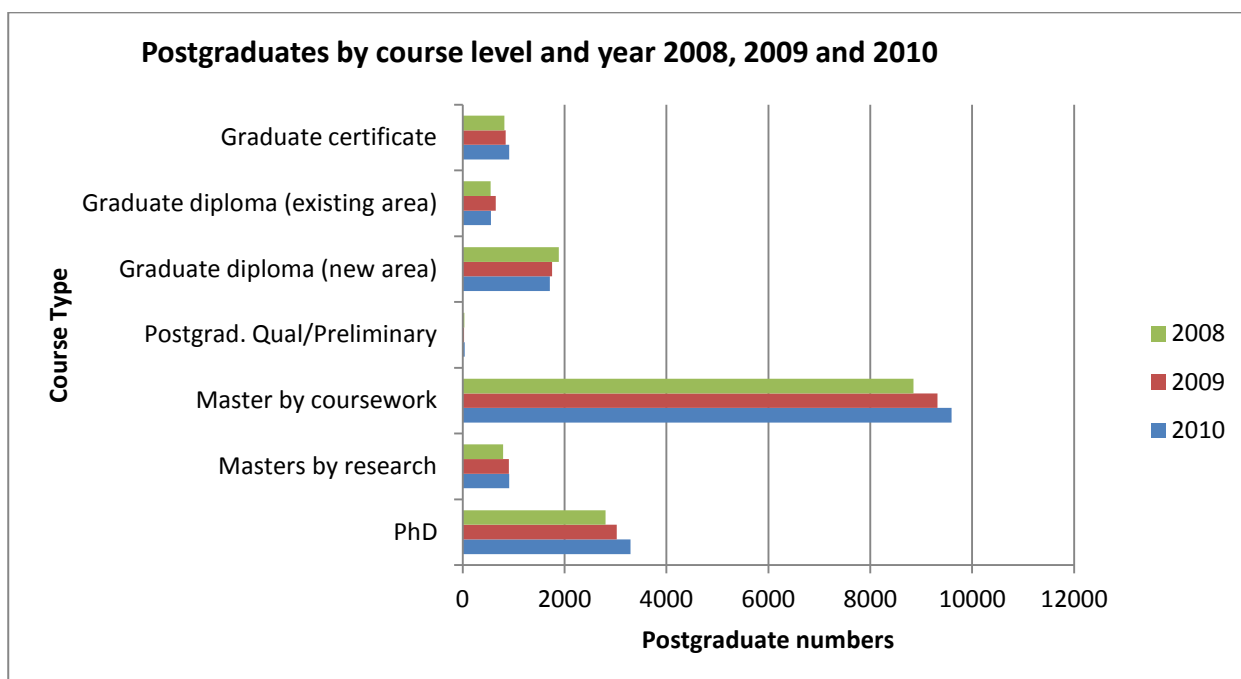
- 78% of HDRs were enrolled in PhDs
- 22% of HDRs were enrolled in Masters by research
- 75% of GPGs were enrolled in the Masters by coursework
- 13% of GPGs were enrolled in the Graduate diploma new area

## Course type by course level for 2010, 2009 and 2008

Course level	2010	2009	2008
PhD	3295	3025	2805
Masters by research	916	908	795
<b>HDR total</b>	<b>4211</b>	<b>3933</b>	<b>3600</b>
Master by coursework	9593	9320	8847
Postgrad. Qual/Preliminary	38	31	36
Graduate diploma (new area)	1711	1754	1888
Graduate diploma (existing area)	557	652	550
Graduate certificate	912	848	820
<b>GPG total</b>	<b>12811</b>	<b>12605</b>	<b>12141</b>
<b>Total</b>	<b>17022</b>	<b>16538</b>	<b>15741</b>

Source: Monash University Planning and Statistics, as at 18 July 2011, 15 June 2010 and 5 May 2009.

In 2010 the majority (78%) of HDRs were enrolled in a PhD program and the majority (75%) of GPGs were enrolled in a Masters by coursework degree.



# Commencing & returning student status

In 2010:

- 43% of postgraduates were commencing
- 57% of postgraduates were returning
- 27% of HDR were commencing
- 73% of HDR were returning
- 48% of GPG were commencing
- 52% of GPG were returning

## Commencing and returning postgraduates by course type 2010, 2009 and 2008

	Commencing	Returning	Total
<b>2010</b>			
Higher degree by research	1145	3066	4211
Graduate/postgraduate	6124	6687	12811
<b>Total</b>	<b>7269</b>	<b>9753</b>	<b>17022</b>
<b>2009</b>			
Higher degree by research	1138	2795	3933
Graduate/postgraduate	6384	6221	12605
<b>Total</b>	<b>7522</b>	<b>9016</b>	<b>16538</b>
<b>2008</b>			
Higher degree by research	907	2693	3600
Graduate/postgraduate	5749	6392	12141
<b>Total</b>	<b>6656</b>	<b>9085</b>	<b>15741</b>

Source: Monash University Planning and Statistics, as at 18 July 2011, 15 June 2010 and 5 May 2009.

In 2010:

- 76% of commencing postgraduates at Clayton were GPG
- 93% of commencing postgraduates at Caulfield were GPG
- 91% of commencing postgraduates at Peninsula were GPG
- 94% of commencing postgraduates at Gippsland were GPG
- 91% of commencing postgraduates at Parkville were GPG

## Commencing and returning postgraduates by course type by campus, 2010

	Clayton	Caulfield	Peninsula	Gippsland	Parkville	Berwick	Sunway	South Africa	Clayton
HDR Com.	792	177	41	37	30	7	55	6	1145
HDR Ret.	2049	585	102	129	99	10	92	0	3066
GPG Com.	2465	2305	434	553	292	0	53	22	6124
GPG Ret.	2537	3036	291	576	197	0	50	0	6687
<b>Total</b>	<b>7843</b>	<b>6103</b>	<b>868</b>	<b>1295</b>	<b>618</b>	<b>17</b>	<b>250</b>	<b>28</b>	<b>17022</b>

Source: Monash University Planning and Statistics, as at 18 July 2011

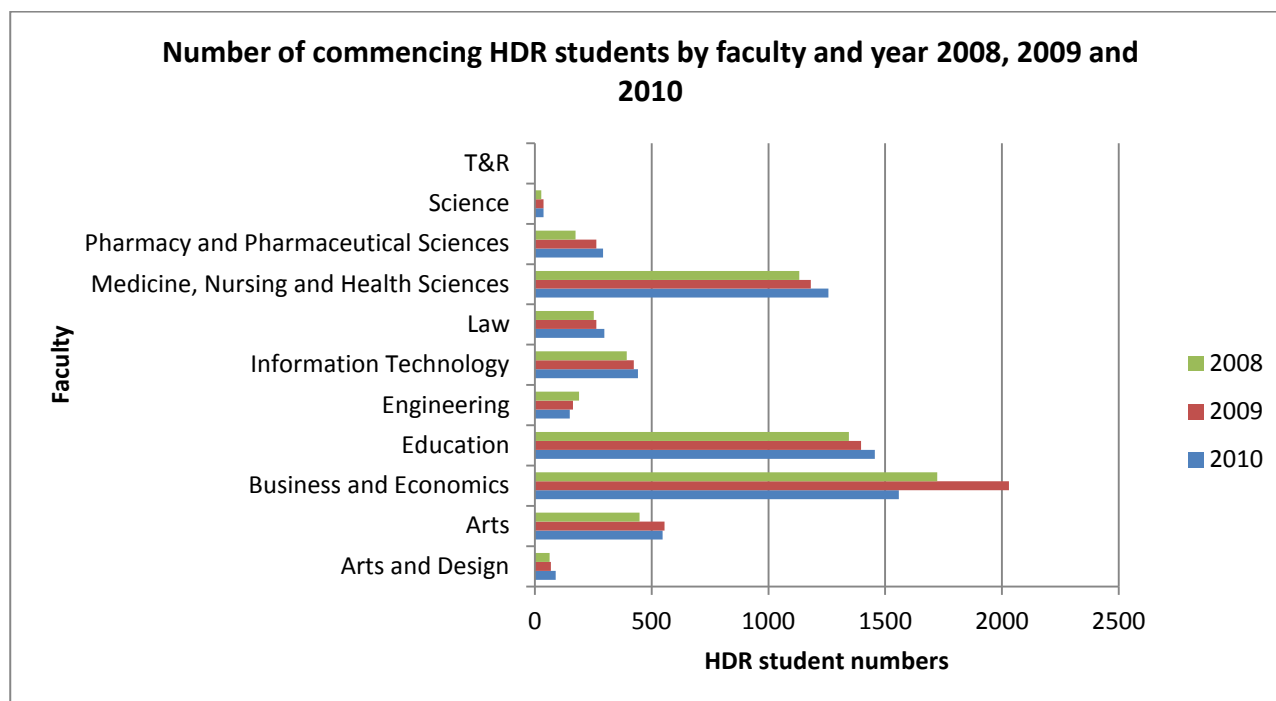
In 2010 there were more returning HDR postgraduates than commencing in each faculty. Returning GPGs were greater than commencing GPGs in the Faculties of Business and Economics, Engineering, Information Technology, Law and Medicine, Nursing and Health Sciences.

### Commencing and returning by course type and by faculty 2010

	Higher degree research by commencing	Higher degree by research returning	Graduate/postgraduate commencing	Graduate/postgraduate returning
Arts and Design	80	219	90	79
Arts	168	448	547	515
Business and Economics	88	306	1558	2375
Education	140	355	1455	1092
Engineering	176	335	149	202
Information Technology	45	148	442	450
Law	38	58	297	419
Medicine, Nursing and Health Sciences	251	798	1257	1329
Pharmacy and Pharmaceutical Sciences	30	99	292	197
Science	124	284	37	29
T&R	5	16		

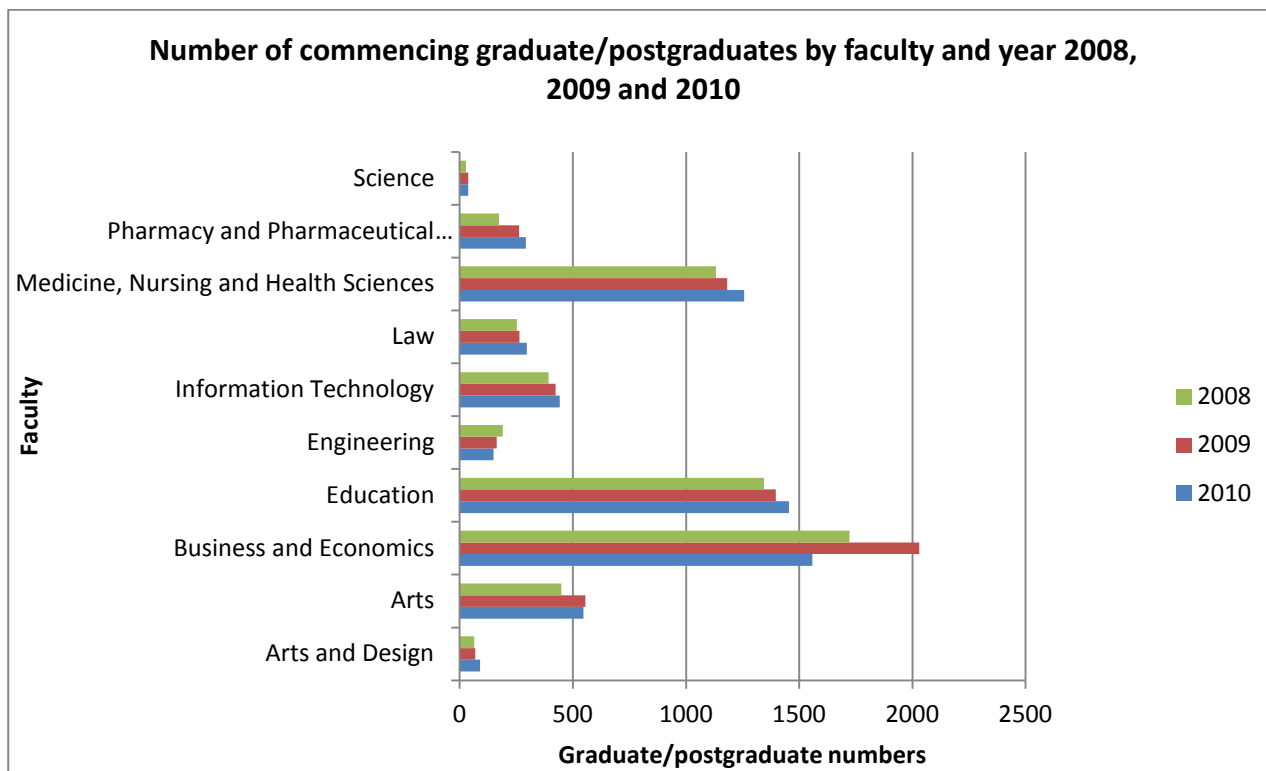
Source: Monash University Planning and Statistics, as at 18 July 2011

Between 2008 and 2010 the overall number of commencing HDRs increased in all faculties except in the Faculties of Business and Economics and Engineering.





The Faculty of Business and Economics had the largest number of commencing GPGs in 2010. The Faculties of Engineering and Business and Economics experienced an overall decline in commencing GPGs from 2008-2010 while for all other faculties this figure increased.



# Age of postgraduates

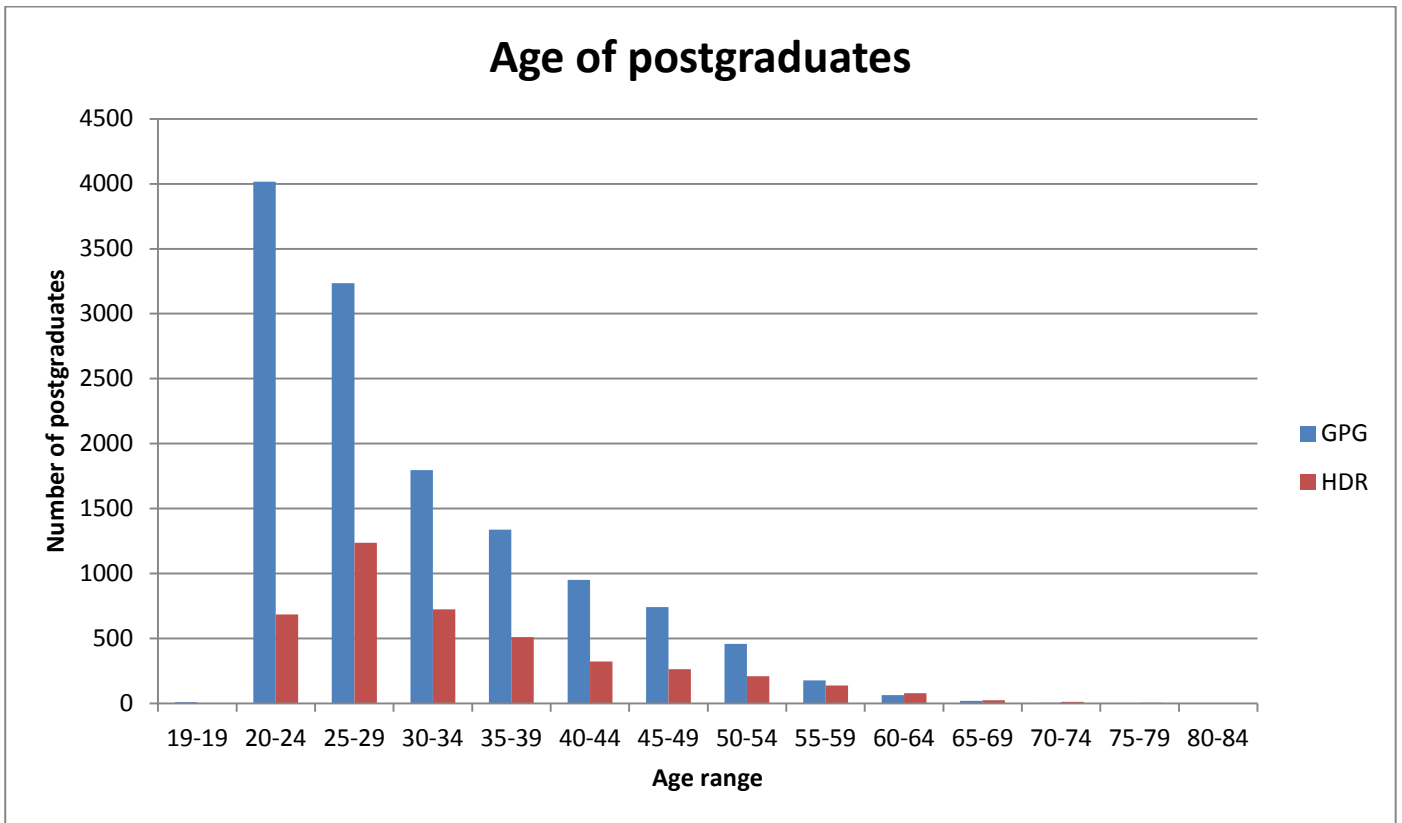
In 2010:

- The average age of postgraduates at Monash was 32
- The average age of HDRs at Monash was 34
- The average age of GPGs at Monash was 31
- The highest average age of a postgraduate group was at the Peninsula campus, with an HDR average age of 40.
- The lowest average age of a postgraduate group was at the Sunway campus, with a GPG average age of 26.

## Average age by course type by campus for 2010, 2009 and 2008

	Clayton	Caulfield	Peninsula	Gippsland	Parkville	Berwick	Sunway	South Africa	Overall average age
<b>2010</b>									
HDR	33	39	40	38	28	35	31	25	<b>34</b>
GPG	34	28	34	35	28	-	26	35	<b>31</b>
<b>Overall average</b>	<b>33</b>	<b>29</b>	<b>35</b>	<b>35</b>	<b>28</b>	<b>35</b>	<b>29</b>	<b>33</b>	<b>32</b>
<b>2009</b>									
HDR	33	39	41	38	28	34	30	-	<b>35</b>
GPG	34	28	35	36	28	-	26	31	<b>31</b>
<b>Overall average</b>	<b>33</b>	<b>34</b>	<b>38</b>	<b>37</b>	<b>28</b>	<b>34</b>	<b>28</b>	<b>31</b>	<b>33</b>
<b>2008</b>									
HDR	33	39	41	40	28	35	29	-	<b>35</b>
GPG	33	28	34	35	28	-	25	31	<b>31</b>
<b>Overall average</b>	<b>33</b>	<b>29</b>	<b>35</b>	<b>36</b>	<b>28</b>	<b>35</b>	<b>28</b>	<b>31</b>	<b>32</b>

Source: Monash University Planning and Statistics, as at 5 May 2009. 15 June 2010 and 18 July 2011



While the average age of postgraduates was 32 years in 2010, almost a third (29%) of HDRs were in the age range of 25 to 29 years with numbers decreasing as age increased. The two oldest HDRs in 2010 were 83 and 84 years of age.

Approximately one third of GPGs (31%) were in the age range of 20 to 24 years followed by 25% in the 25 to 29 year old range. Ages of GPGs ranged from 19 to 80 years old.

# International postgraduates

In 2010:

- 32% of postgraduates were international students
- 22% of postgraduates on Clayton campus were international students
- 49% of postgraduates on Caulfield campus were international students
- 16% of postgraduates on Gippsland campus were international students

While the postgraduate population at Caulfield campus was almost equally divided between domestic and international students, there were three times as many domestic postgraduates at Clayton as there were international postgraduates during 2010.

## International and domestic postgraduates by campus for 2010, 2009 and 2008

	Clayton	Caulfield	Peninsula	Gippsland	Parkville	Berwick	Sunway	South Africa	Total
<b>2010</b>									
Domestic	6080	3139	684	1091	575	12	1	0	<b>11582</b>
International	1763	2964	184	204	43	5	249	28	<b>5440</b>
<b>Total</b>	<b>7843</b>	<b>6103</b>	<b>868</b>	<b>1295</b>	<b>618</b>	<b>17</b>	<b>250</b>	<b>28</b>	<b>17022</b>
<b>2009</b>									
Domestic	5753	3107	606	1092	483	15	1	0	<b>11057</b>
International	1769	3089	166	233	37	4	182	1	<b>5481</b>
<b>Total</b>	<b>7522</b>	<b>6196</b>	<b>772</b>	<b>1325</b>	<b>520</b>	<b>19</b>	<b>183</b>	<b>1</b>	<b>16538</b>
<b>2008</b>									
Domestic	5334	3171	540	1078	390	19	0	0	<b>10552</b>
International	1838	2807	123	273	40	1	124	3	<b>5189</b>
<b>Total</b>	<b>7172</b>	<b>5978</b>	<b>663</b>	<b>1351</b>	<b>430</b>	<b>20</b>	<b>124</b>	<b>3</b>	<b>15741</b>

Source: Monash University Planning and Statistics, as at 18 July 2011, 15 June 2010 and 5 May 2009.

The majority (77%) of the international postgraduate population in 2010 were GPGs. Of the 43 international postgraduates at Parkville 37 were HDRs.

## International postgraduates by course type, commencing and returning, by campus, 2010

	Clayton	Caulfield	Peninsula	Gippsland	Parkville	Berwick	Sunway	South Africa	Total
HDR Com	270	43	4	18	11	1	55	6	<b>408</b>
HDR Ret	543	118	17	39	26	4	91		<b>838</b>
<b>HDR Total</b>	<b>813</b>	<b>161</b>	<b>21</b>	<b>57</b>	<b>37</b>	<b>5</b>	<b>146</b>	<b>6</b>	<b>1246</b>
GPG Com	504	1286	68	44	3		53	22	<b>1980</b>
GPG Ret	446	1517	95	103	3		50		<b>2214</b>
<b>GPG Total</b>	<b>950</b>	<b>2803</b>	<b>163</b>	<b>147</b>	<b>6</b>		<b>103</b>	<b>22</b>	<b>4194</b>
<b>Total</b>	<b>1763</b>	<b>2964</b>	<b>184</b>	<b>204</b>	<b>43</b>	<b>5</b>	<b>249</b>	<b>28</b>	<b>5440</b>

Source: Monash University Planning and Statistics, as at 18 July 2011

Between 2008 and 2010 numbers of international postgraduates decreased at Clayton and Gippsland campuses. The number of international postgraduates at all other campuses increased during this time.

#### International postgraduates by course type by campus by year 2010, 2009 and 2008

	Clayton	Caulfield	Peninsula	Gippsland	Parkville	Berwick	Sunway	South Africa	Total
<b>2010</b>									
HDR	813	161	21	57	37	5	146	6	<b>1246</b>
GPG	950	2803	163	147	6		103	22	<b>4194</b>
<b>Total</b>	<b>1763</b>	<b>2964</b>	<b>184</b>	<b>204</b>	<b>43</b>	<b>5</b>	<b>249</b>	<b>28</b>	<b>5440</b>
<b>2009</b>									
HDR	698	135	17	59	31	4	100	0	<b>1044</b>
GPG	1071	2954	149	174	6	0	82	1	<b>4437</b>
<b>Total</b>	<b>1769</b>	<b>3089</b>	<b>166</b>	<b>233</b>	<b>37</b>	<b>4</b>	<b>182</b>	<b>1</b>	<b>5481</b>
<b>2008</b>									
HDR	558	126	19	49	32	1	75	0	<b>860</b>
GPG	1280	2681	104	224	8	0	49	3	<b>4349</b>
<b>Total</b>	<b>1838</b>	<b>2807</b>	<b>123</b>	<b>273</b>	<b>40</b>	<b>1</b>	<b>124</b>	<b>3</b>	<b>5209</b>

Source: Monash University Planning and Statistics, as at 5 May 2009, 15 June 2010 and 18 July 2011

In 2010, the proportion of international postgraduates in each faculty was:

- 26% in Art and Design
- 25% in Arts
- 52% in Business and Economics
- 28% in Education
- 35% in Engineering
- 66% in Information Technology
- 8% in Law
- 13% in Medicine, Nursing and Health Sciences
- 7% in Pharmacy and Pharmaceutical Sciences
- 36% in Science
- 19% in T&R

During 2010, the largest number of postgraduates were enrolled in the Faculty of Business and Economics (4,327) and more than half of these (2,264) were international students, most of whom were GPGs (2,079).

In the Faculty of Information Technology, in 2010, there were almost twice as many international postgraduates (719) as there were domestic postgraduates (366), and the majority of these international students were GPGs (609). In Information Technology there were more international (110) than domestic (83) HDRs.

The faculty with the lowest number of international HDR postgraduates was Law with 14 students, followed by Art and Design with 15 students.

## International and domestic postgraduates by course type and faculty, 2010

		Higher degree research	Graduate/postgraduate coursework	Total
Art and Design	Domestic	284	61	<b>345</b>
	International	15	108	<b>123</b>
Arts	Domestic	481	774	<b>1255</b>
	International	135	288	<b>423</b>
Business and Economics	Domestic	209	1854	<b>2063</b>
	International	185	2079	<b>2264</b>
Education	Domestic	376	1821	<b>2197</b>
	International	119	726	<b>845</b>
Engineering	Domestic	256	301	<b>557</b>
	International	255	50	<b>305</b>
Information Technology	Domestic	83	283	<b>366</b>
	International	110	609	<b>719</b>
Law	Domestic	82	668	<b>750</b>
	International	14	48	<b>62</b>
Medicine, Nursing and Health Sciences	Domestic	846	2310	<b>3156</b>
	International	203	276	<b>479</b>
Pharmacy and Pharmaceutical Sciences	Domestic	92	483	<b>575</b>
	International	37	6	<b>43</b>
Science	Domestic	239	62	<b>301</b>
	International	169	4	<b>173</b>
T&R	Domestic	17		<b>17</b>
	International	4		<b>4</b>
<b>Total</b>		<b>4211</b>	<b>12811</b>	<b>17022</b>

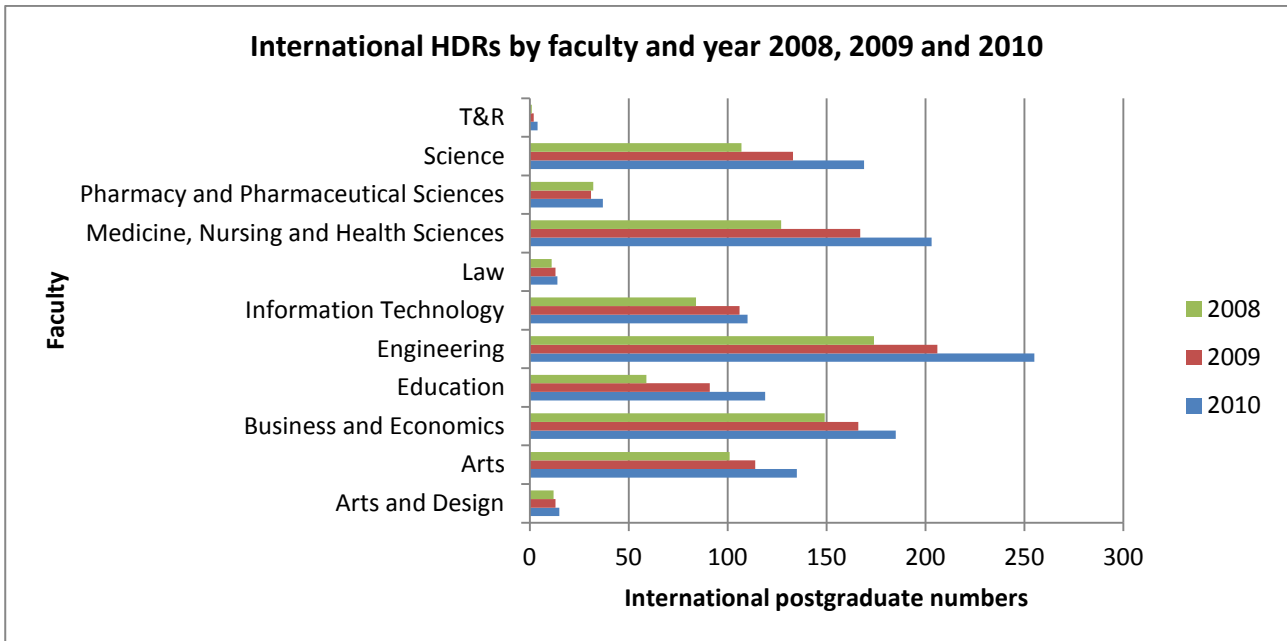
Source: Monash University Planning and Statistics, as at 18 July 2011

## International postgraduates by faculty by course type for 2010, 2009 and 2008

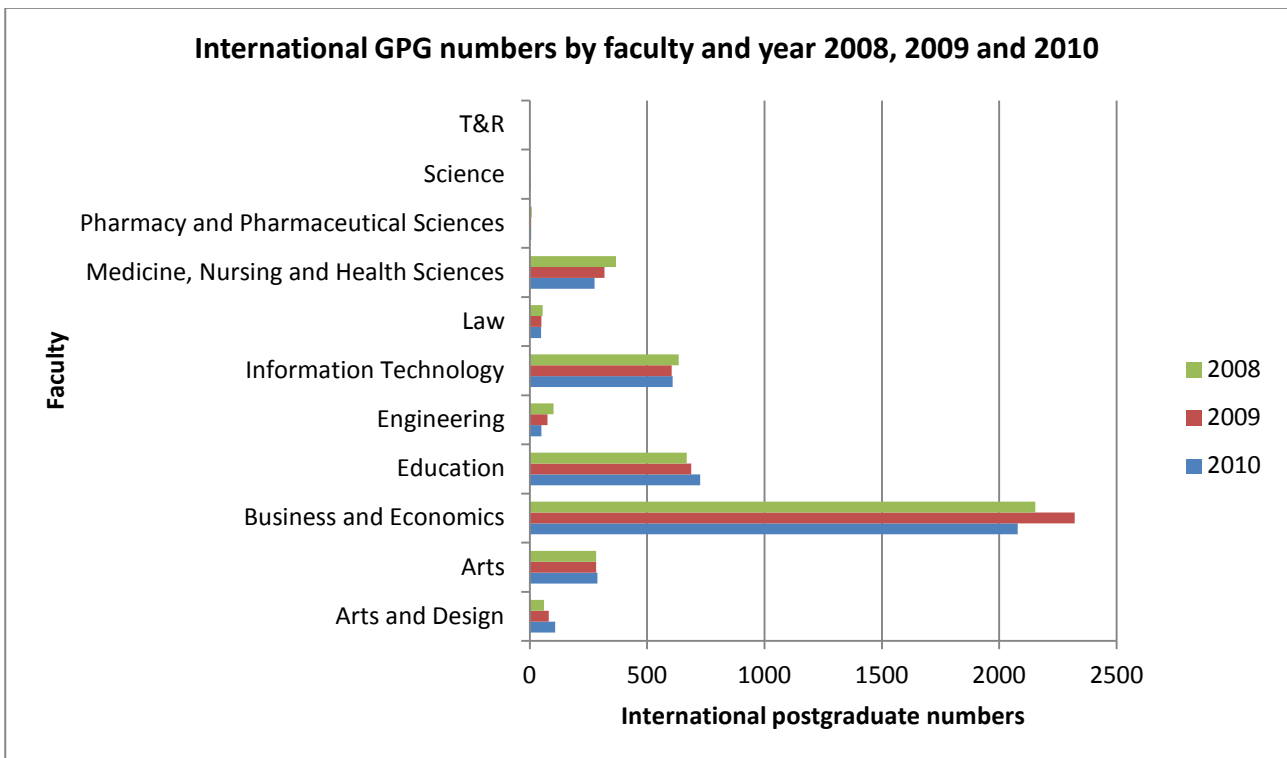
Faculty		Higher degree research	Graduate postgraduate
Art and Design	2010	15	108
	2009	13	81
	2008	12	61
Arts	2010	135	288
	2009	114	283
	2008	101	282
Business and Economics	2010	185	2079
	2009	166	2321
	2008	149	2153
Education	2010	119	726
	2009	91	687
	2008	59	668
Engineering	2010	255	50
	2009	206	76
	2008	174	101
Information Technology	2010	110	609
	2009	106	604
	2008	84	634
Law	2010	14	48
	2009	13	50
	2008	11	55
Medicine, Nursing and Health Sciences	2010	203	276
	2009	167	318
	2008	127	367
Pharmacy and Pharmaceutical Sciences	2010	37	6
	2009	31	6
	2008	32	8
Science	2010	169	4
	2009	133	3
	2008	107	3
T&R	2010	4	
	2009	2	
	2008	1	

Source: Monash University Planning and Statistics, as at 5 May 2009, 15 June 2010 and 18 July 2011

Overall the number of international HDRs increased in every faculty between 2008 and 2010.



Between 2008 and 2010, the number of international GPGs increased in the Faculties of Art and Design, Arts, Education and Science, but decreased overall in all other faculties.





In 2010:

- Approximately one third of international postgraduates were from China (1,746).
- Malaysia had the highest number of international HDRs (238), followed by China (118) and India (116).
- China had the highest number of international GPGs (1,627), followed by Singapore (443) and Hong Kong (313).

**Country of residence of international postgraduates (numbers above 50) by course type, 2010**

	Higher degree research	Graduate/postgraduate	<b>Total</b>
Bangladesh	74	22	<b>96</b>
China (excl SARs and Taiwan)	118	1627	<b>1745</b>
Hong Kong (SAR of China)	9	313	<b>322</b>
India	116	281	<b>397</b>
Indonesia	79	253	<b>332</b>
Iran	49	30	<b>79</b>
Malaysia	238	228	<b>466</b>
Pakistan	19	35	<b>54</b>
Saudi Arabia	26	80	<b>106</b>
Singapore	71	443	<b>514</b>
Sri Lanka	52	30	<b>82</b>
Taiwan	17	41	<b>58</b>
Thailand	20	90	<b>110</b>
United States of America	26	39	<b>65</b>
Viet Nam	32	158	<b>190</b>

Source: Monash University Planning and Statistics, as at 18 July 2011

# Sex

In 2010:

- 60% of postgraduates were female
- 40% of postgraduates were male
- 54% of HDRs were female
- 46% of HDRs were male
- 62% of GPGs were female
- 38% of GPGs were male

## Sex of postgraduates by course type for 2010, 2009 and 2008

	Female	Male	Total
<b>2010</b>			
Higher degree by research	2280	1931	<b>4211</b>
Graduate/postgraduate coursework	7901	4910	<b>12811</b>
<b>Total</b>	<b>10181</b>	<b>6841</b>	<b>17022</b>
<b>2009</b>			
Higher degree by research	2185	1748	<b>3933</b>
Graduate/postgraduate coursework	7650	4955	<b>12605</b>
<b>Total</b>	<b>9835</b>	<b>6703</b>	<b>16538</b>
<b>2008</b>			
Higher degree by research	2035	1565	<b>3600</b>
Graduate/postgraduate coursework	7365	4776	<b>12141</b>
<b>Total</b>	<b>9400</b>	<b>6341</b>	<b>15741</b>

Source: Monash University Planning and Statistics, as at 5 May 2009, 15 June 2010 and 18 July 2011

In 2010 there were more female postgraduates than males at every campus except Berwick. At Peninsula and Parkville campuses there were more than double the numbers of female postgraduates to male postgraduates.

## Sex of postgraduates by campus, 2010

	Clayton	Caulfield	Peninsula	Gippsland	Parkville	Berwick	Sunway	South Africa	Total
Female	4868	3299	635	762	449	7	143	18	<b>10181</b>
Male	2975	2804	233	533	169	10	107	10	<b>6841</b>
<b>Total</b>	<b>7843</b>	<b>6103</b>	<b>868</b>	<b>1295</b>	<b>618</b>	<b>17</b>	<b>250</b>	<b>28</b>	<b>17022</b>

Source: Monash University Planning and Statistics, as at 18 July 2011

In 2010:

- 72% of male HDRs and 65% of female HDRs were enrolled full-time.
- 49% of male GPGs and 43% of female GPGs were enrolled full-time.
- 64% of the part-time postgraduate population at Monash was female.

## Sex of postgraduates by course type and attendance type, 2010

		Female	Male	Total
Higher degree by research	Full-time	1476	1394	<b>2870</b>
	Part-time	804	537	<b>1341</b>
Graduate/postgraduate	Full-time	3379	2395	<b>5774</b>
	Part-time	4522	2515	<b>7037</b>
<b>Total</b>		<b>10181</b>	<b>6841</b>	<b>17022</b>

Source: Monash University Planning and Statistics, as at 18 July 2011

There were more female HDRs than male in the Faculties of Art and Design, Arts, Education, Law and Medicine. There were more male HDR candidates than female in the Faculties of Business and Economics, Engineering, Information Technology, Pharmacy and Science.

Of the 3,635 postgraduates in the Faculty of Medicine, Nursing and Health Sciences in 2010, 54% were female GPGs. Similarly, of the 3042 postgraduates enrolled in the Faculty of Education, 60% were female GPGs.

## Sex of postgraduates by course type and faculty, 2010

		Female	Male	Total
Arts and Design	HDR	179	120	<b>299</b>
	GPG	117	52	<b>169</b>
Arts	HDR	336	280	<b>616</b>
	GPG	719	343	<b>1062</b>
Business and Economics	HDR	189	205	<b>394</b>
	GPG	2101	1832	<b>3933</b>
Education	HDR	335	160	<b>495</b>
	GPG	1843	704	<b>2547</b>
Engineering	HDR	144	367	<b>511</b>
	GPG	56	295	<b>351</b>
Information Technology	HDR	55	138	<b>193</b>
	GPG	265	627	<b>892</b>
Law	HDR	57	39	<b>96</b>
	GPG	421	295	<b>716</b>
Medicine, Nursing and Health Sciences	HDR	718	331	<b>1049</b>
	GPG	1966	620	<b>2586</b>
Pharmacy and Pharmaceutical Sciences	HDR	64	65	<b>129</b>
	GPG	385	104	<b>489</b>
Science	HDR	192	216	<b>408</b>
	GPG	28	38	<b>66</b>
T&R	HDR	11	10	<b>21</b>
<b>Total</b>		<b>10181</b>	<b>6841</b>	<b>17022</b>

Source: Monash University Planning and Statistics, as at 18 July 2011

# Australian Aboriginal & Torres Strait Islander (ATSI) postgraduate enrolments

The number of Aboriginal and Torres Strait Islander postgraduates increased between 2008 and 2010. HDR numbers increased slightly each year while GPGs decreased between 2008-9 then increased between 2009-10.

## ATSI postgraduates by campus, 2010, 2009 and 2008

Campus	Clayton	Caulfield	Peninsula	Gippsland	Parkville	Berwick	Sunway	South Africa	Total
<b>2010</b>									
Higher degree by research	8	7	2	2	0	0	0	0	19
Graduate postgraduate	12	5	0	3	0	0	0	0	20
<b>Total</b>	<b>20</b>	<b>12</b>	<b>2</b>	<b>5</b>	<b>0</b>	<b>0</b>	<b>0</b>	<b>0</b>	<b>39</b>
<b>2009</b>									
Higher degree by research	7	6	0	3	0	0	0	0	16
Graduate postgraduate	6	8	1	2	0	0	0	0	17
<b>Total</b>	<b>13</b>	<b>14</b>	<b>1</b>	<b>5</b>	<b>0</b>	<b>0</b>	<b>0</b>	<b>0</b>	<b>33</b>
<b>2008</b>									
Higher degree by research	6	3	0	2	0	0	0	0	11
Graduate postgraduate	10	7	1	1	0	0	0	0	19
<b>Total</b>	<b>16</b>	<b>10</b>	<b>1</b>	<b>3</b>	<b>0</b>	<b>0</b>	<b>0</b>	<b>0</b>	<b>30</b>

Source: Monash University Planning and Statistics, as at 5 May 2009, 15 June 2010 and 18 July 2011

More than 61% of the ATSI postgraduates in 2008, 2009 and 2010 were female.

## ATSI postgraduates by sex, 2010, 2009 and 2008

Sex	Female	Male	Total
2010	24	15	39
2009	22	11	33
2008	21	9	30

Source: Monash University Planning and Statistics, as at 5 May 2009, 15 June 2010 and 18 July 2011

More than 63% of the ATSI postgraduates in 2008, 2009 and 2010 were part-time students.

### ATSI postgraduates by attendance type, 2010, 2009 and 2008

	Full-time	Part-time	Total
2010	12	27	<b>39</b>
2009	12	21	<b>33</b>
2008	11	19	<b>30</b>

Source: Monash University Planning and Statistics, as at 5 May 2009, 15 June 2010 and 18 July 2011

In 2010, 11 of the 39 Indigenous postgraduates were enrolled in the Faculty of Education and 9 were enrolled in the Faculty of Medicine, Nursing and Health Sciences. Between 2008 and 2010, there were no Indigenous students enrolled in HDR or GPG degrees in the Faculties of Engineering or Pharmacy. The Faculty of Law has had a consistent number of ATSI GPGs over the three year period.

### ATSI postgraduates by faculty and course type, 2010, 2009 and 2008

Faculty		2010	2009	2008
Art and Design	HDR	5	4	2
	GPG	1	0	0
Arts	HDR	3	3	2
	GPG	2	0	0
Business and Economics	HDR	0	0	1
	GPG	1	3	5
Education	HDR	6	5	5
	GPG	5	3	3
Engineering	HDR	0	0	0
	GPG	0	0	0
Information Technology	HDR	0	0	0
	GPG	1	4	3
Law	HDR	1	0	0
	GPG	3	3	3
Medicine, Nursing and Health Sciences	HDR	2	2	1
	GPG	7	3	4
Pharmacy and Pharmaceutical Sciences	HDR	0	0	0
	GPG	0	0	0
Science	HDR	2	2	0
	GPG	0	1	1
<b>Total</b>		<b>39</b>	<b>33</b>	<b>30</b>

Source: Monash University Planning and Statistics, as at 5 May 2009, 15 June 2010 and 18 July 2011

Between 2008 and 2010 the number of undergraduate ATSI students was highest in the Faculties of Arts, and Medicine, Nursing and Health Sciences.

### ATSI undergraduates by faculty, 2010, 2009 and 2008

Faculty	2010	2009	2008
Art and Design	3	2	1
Arts	33	29	23
Business and Economics	4	5	6
Education	10	12	8
Engineering	1	2	1
Information Technology	3	2	1
Law	5	7	6
Medicine, Nursing and Health Sciences	21	17	17
Pharmacy and Pharmaceutical Sciences	1	1	1
Science	10	7	8
<b>Total</b>	<b>91</b>	<b>84</b>	<b>72</b>

Source: Monash University Planning and Statistics, as at 15 June 2010 and 18 July 2011

## Funding source

Of the 4211 HDRs in 2010, 70% were supported by the Research Training Scheme or were domestic and fee-exempt. Thirty percent of the HDRs in 2010 were international fee-paying students.

Thirty-three percent of GPGs were international fee-paying in 2010. While there were 8610 domestic GPGs, 47% held Commonwealth Supported Places, 28% were fee-paying students assisted with FEE-HELP, and 25% were fee-paying without FEE-HELP.

### Funding source by campus and by course type, 2010

Payment method	Clayton	Caulfield	Peninsula	Gippsland	Parkville	Berwick	Sunway	South Africa	Total
<b>Higher degree by research</b>									
Research Training Scheme	1875	554	114	99	90	12	0	0	<b>2744</b>
International fee-paying	813	161	21	57	37	5	146	6	<b>1246</b>
Domestic fee-exempt	152	47	8	10	2	0	0	0	<b>219</b>
Domestic fee-paying, no FEE-HELP	1	0	0	0	0	0	1	0	<b>2</b>
<b>HDR Total</b>	<b>2039</b>	<b>762</b>	<b>143</b>	<b>166</b>	<b>129</b>	<b>17</b>	<b>147</b>	<b>6</b>	<b>4211</b>
<b>Graduate postgraduate</b>									
CSP	2039	364	404	822	423	0	0	0	<b>4052</b>
International fee-paying	951	2809	163	147	6	0	103	22	<b>4201</b>
Domestic fee-paying with FEE-HELP	994	1259	32	101	22	0	0	0	<b>2408</b>
Domestic fee-paying, no FEE-HELP	1018	909	126	59	38	0	0	0	<b>2150</b>
<b>GPG Total</b>	<b>5002</b>	<b>5341</b>	<b>725</b>	<b>1129</b>	<b>489</b>	<b>0</b>	<b>103</b>	<b>22</b>	<b>12811</b>
<b>Total</b>	<b>7843</b>	<b>6103</b>	<b>868</b>	<b>1295</b>	<b>618</b>	<b>17</b>	<b>250</b>	<b>28</b>	<b>17022</b>

Source: Monash University Planning and Statistics, as at 18 July 2011

## Attendance type

In 2010:

- 51% of postgraduates were enrolled full-time
- 49% of postgraduates were enrolled part-time
- 68% of HDRs were enrolled full-time
- 32% of HDRs were enrolled part-time
- 45% of GPGs were enrolled full-time
- 55% of GPGs were enrolled part-time

### Attendance type by course type, 2010, 2009 and 2008

	Full-time	Part-time	Total
<b>2010</b>			
Higher degree by research	2870	1341	<b>4211</b>
Graduate/postgraduate	5774	7037	<b>12811</b>
<b>Total</b>	<b>8644</b>	<b>8378</b>	<b>17022</b>
<b>2009</b>			
Higher degree by research	2616	1317	<b>3933</b>
Graduate/postgraduate	5677	6928	<b>12605</b>
<b>Total</b>	<b>8293</b>	<b>8245</b>	<b>16538</b>
<b>2008</b>			
Higher degree by research	2320	1280	<b>3600</b>
Graduate/postgraduate	5302	6839	<b>12141</b>
<b>Total</b>	<b>7622</b>	<b>8119</b>	<b>15741</b>

Source: Monash University Planning and Statistics, as at 5 May 2009, 15 June 2010 and 18 July 2011



In 2010:

- 50% of postgraduates at Clayton were enrolled full-time
- 50% of postgraduates at Clayton were enrolled part-time
- 62% of postgraduates at Caulfield were enrolled full-time
- 38% of postgraduates at Caulfield were enrolled part-time

Numbers of part-time postgraduates were substantially higher than full-time postgraduates at:

- Peninsula with 60% of the postgraduate population studying part-time
- Gippsland with 79% of the postgraduate population studying part-time
- Parkville with 81% of the postgraduate population studying part-time

### Attendance type by campus 2010, 2009 and 2008

	Clayton	Caulfield	Peninsula	Gippsland	Parkville	Berwick	Sunway	South Africa	Total
<b>2010</b>									
Full-time	3925	3777	348	269	117	13	189	6	<b>8644</b>
Part-time	3918	2326	520	1026	501	4	61	22	<b>8378</b>
<b>Total</b>	<b>7843</b>	<b>6103</b>	<b>868</b>	<b>1295</b>	<b>618</b>	<b>19</b>	<b>183</b>	<b>28</b>	<b>17022</b>
<b>2009</b>									
Full-time	3671	3798	310	251	110	13	140	0	<b>8293</b>
Part-time	3851	2398	462	1074	410	6	43	1	<b>8245</b>
<b>Total</b>	<b>7522</b>	<b>6196</b>	<b>772</b>	<b>1325</b>	<b>520</b>	<b>19</b>	<b>183</b>	<b>1</b>	<b>16538</b>
<b>2008</b>									
Full-time	3457	3475	269	216	104	11	90	0	<b>7622</b>
Part-time	3715	2503	394	1135	326	9	34	3	<b>8119</b>
<b>Total</b>	<b>7172</b>	<b>5978</b>	<b>663</b>	<b>1351</b>	<b>430</b>	<b>20</b>	<b>124</b>	<b>3</b>	<b>15741</b>

Source: Monash University Planning and Statistics, as at 5 May 2009, 15 June 2010 and 18 July 2011

# Attendance mode

In 2010:

- 66% of postgraduates were enrolled via internal mode
- 28% of postgraduates were enrolled via external mode
- 6% of postgraduates were enrolled via multi-mode
- 92% of HDRs were enrolled via internal mode
- 7% of HDRs were enrolled via external mode
- 1% of HDRs were enrolled via multi-mode
- 58% of GPGs were enrolled via internal mode
- 34% of GPGs were enrolled via external mode
- 8% of GPGs were enrolled via multi-mode

## Attendance mode by course type and by year 2010, 2009 and 2008

	Internal	External	Multi-modal	Total
<b>2010</b>				
Higher degree by research	3858	314	39	<b>4211</b>
Graduate/postgraduate	7427	4412	972	<b>12811</b>
<b>Total</b>	<b>11285</b>	<b>4726</b>	<b>1011</b>	<b>17022</b>
<b>2009</b>				
Higher degree by research	3587	291	55	<b>3933</b>
Graduate/postgraduate	7644	4201	760	<b>12605</b>
<b>Total</b>	<b>11231</b>	<b>4492</b>	<b>815</b>	<b>16538</b>
<b>2008</b>				
Higher degree by research	3337	246	17	<b>2600</b>
Graduate/postgraduate	7528	3885	728	<b>12141</b>
<b>Total</b>	<b>10865</b>	<b>4131</b>	<b>745</b>	<b>15741</b>

Source: Monash University Planning and Statistics, as at 5 May 2009, 15 June 2010 and 18 July 2011

Between 2008 and 2010 postgraduate enrolments increased in all modes of study.

In 2010:

- 76% of postgraduates at Parkville were enrolled via external mode
- 73% of postgraduates at Gippsland were enrolled via external mode
- 37% of postgraduates at Peninsula were enrolled via external mode
- 29% of postgraduates at Clayton were enrolled via external mode
- 11% of postgraduates at Caulfield were enrolled via external mode

#### Attendance mode by campus and by year 2010, 2009 and 2008

	Clayton	Caulfield	Peninsula	Gippsland	Parkville	Berwick	Sunway	South Africa	Total
<b>2010</b>									
Internal	5028	5222	414	200	127	17	249	28	<b>11 285</b>
External	2306	681	325	943	471	0	0	0	<b>4 726</b>
Multi-modal	509	200	129	152	20	0	1	0	<b>1 011</b>
<b>Total</b>	<b>7843</b>	<b>6103</b>	<b>868</b>	<b>1295</b>	<b>618</b>	<b>17</b>	<b>250</b>	<b>28</b>	<b>17 022</b>
<b>2009</b>									
Internal	4991	5357	352	212	116	19	183	1	<b>11 231</b>
External	2196	649	282	981	384	0	0	0	<b>4 492</b>
Multi-modal	335	190	138	132	20	0	0	0	<b>815</b>
<b>Total</b>	<b>7522</b>	<b>6196</b>	<b>772</b>	<b>1325</b>	<b>520</b>	<b>19</b>	<b>183</b>	<b>1</b>	<b>16 538</b>
<b>2008</b>									
Internal	4896	5116	386	209	112	20	123	3	<b>10 865</b>
External	1927	675	187	1036	305	0	1	0	<b>4 131</b>
Multi-modal	349	187	90	106	13	0	0	0	<b>745</b>
<b>Total</b>	<b>7172</b>	<b>5978</b>	<b>663</b>	<b>1351</b>	<b>430</b>	<b>20</b>	<b>124</b>	<b>3</b>	<b>15 741</b>

Source: Monash University Planning and Statistics, as at 5 May 2009, 15 June 2010 and 18 July 2011

# Student course attempt location

The table lists course attempt locations excluding the eight main campuses and any externally enrolled postgraduates. The remaining locations each have postgraduates physically based at the premises for the duration of their courses.

- 86% of the postgraduates enrolled in the Faculty of Law were based in the city location
- 11% of the postgraduates enrolled in the Faculty of Medicine, Nursing and Health Sciences were based at various hospitals, research centres and other locations as described below.

## Student course attempt location, 2010

Law Faculty	
City location	702
<b>Law total</b>	<b>702</b>
Medicine, Nursing and Health Sciences Faculty	
Alfred Hospital	103
Baker Heart Research Institute - Alfred Hospital	40
Box Hill Hospital	4
Macfarlane Burnet Inst For Med Res & Public Health Alfred	3
Moe (School Of Rural Health Only)	8
Monash Medical Centre - Clayton	54
Monash Medical School - Alfred	182
Notting Hill	11
Peter Maccallum Cancer Institute - East Melbourne	1
Prince Henry's Institute- MMC Clayton	5
Southbank (Department of Forensic Medicine Only)	1
<b>Medicine, Nursing and Health Sciences total</b>	<b>412</b>
<b>Total</b>	<b>1114</b>

Source: Monash University Planning and Statistics, as at 18 July 2011

# Equity groups

Please note, the total number of postgraduates in this section differs to the remainder of the document as this section includes only domestic students with a permanent home residence.

In 2010:

- 390 or 3.5% of domestic postgraduates identified themselves as having a disability
- 1115 or 10% of domestic postgraduates were from a non- English speaking background
- 1138 or 10% of domestic postgraduates were from an area of low socio-economic status

## Equity group by faculty, 2010

Faculty	Disabled	NESB	Low SES	Total
Art and Design	25	10	25	<b>338</b>
Arts	64	83	91	<b>1229</b>
Business and Economics	52	362	138	<b>1946</b>
Education	75	141	264	<b>2136</b>
Engineering	8	111	80	<b>512</b>
Information Technology	14	82	46	<b>348</b>
Law	43	27	56	<b>743</b>
Medicine, Nursing and Health Sciences	85	211	335	<b>3095</b>
Pharmacy and Pharmaceutical Sciences	12	56	73	<b>560</b>
Science	11	31	30	<b>297</b>
T & R	1	1		<b>17</b>
<b>Total</b>	<b>390</b>	<b>1115</b>	<b>1138</b>	<b>11223</b>

Source: Monash University Planning and Statistics, as at 18 July 2011

- The largest number of postgraduates with a disability were enrolled through the Faculty of Medicine, Nursing and Health Sciences (85) however the greatest proportion were enrolled in Art and Design (7.4%), followed by Law (5.8%) and Arts (5.2%).
- The largest number of postgraduates from a non-English speaking background, were enrolled through the Faculty of Business and Economics (362) however the greatest proportion were enrolled in the Faculties of Information Technology (23.6%) and Engineering (21.7%).
- The largest number of postgraduates from an area of low socio-economic status, were enrolled in the Faculty of Medicine, Nursing and Health Sciences (335) however the greatest proportion were in the Engineering Faculty (15.6%).

### Equity group by campus, 2010

Campus	Disabled	NESB	Low SES	Total
Clayton	208	501	555	5910
Caulfield	112	431	217	3012
Gippsland	41	78	210	1061
Peninsula	17	48	80	668
Parkville	12	56	73	560
Berwick		1	3	12
<b>Total</b>	<b>390</b>	<b>1115</b>	<b>1138</b>	<b>11,223</b>

Source: Monash University Planning and Statistics, as at 18 July 2011

- The largest number of postgraduates with a disability were on the Clayton and Caulfield campuses however the greatest proportion, 4% were enrolled via the Gippsland campus.
- 14.3% of the domestic postgraduate population at Caulfield were from a non- English speaking background.
- 19.8% of the domestic postgraduate population at Gippsland were from an area of low socio-economic status.

### Equity group by sex, 2010

Sex	Disabled	NESB	Low SES	Total
Female	248	556	685	<b>6976</b>
Male	142	559	453	<b>4247</b>
<b>Total</b>	<b>390</b>	<b>1115</b>	<b>1138</b>	<b>11,223</b>

Source: Monash University Planning and Statistics, as at 18 July 2011

- 63.6% of postgraduates who identified themselves as having a disability were female.
- 50% of postgraduates from a non-English speaking background were female.
- 60.2% of postgraduates from an area of low socio-economic status were female.