



The **MPA** guide to  
postgraduate numbers  
at Monash University, 2011

Published October 2012

---

**The MPA guide to  
postgraduate numbers  
at Monash University.**

The statistical data used to make the following conclusions are derived from the Monash University Planning and Statistics Unit full year student enrolment data, as at 7 June 2012, 18 July 2011 and 15 June 2010, and can be found at <http://opq.monash.edu.au/us/pivot-table/>

Unless otherwise indicated, the figures refer to University-wide postgraduate numbers.

# Contents page

KEY: .....	5
EXECUTIVE SUMMARY .....	6
Total number of students at Monash University by campus, 2011 .....	6
Postgraduate numbers by faculty, 2011 .....	6
Postgraduate numbers by course type, 2011 .....	6
Postgraduate numbers by commencing and returning, 2011 .....	7
Postgraduate numbers by international/domestic, 2011 .....	7
Postgraduate numbers by sex, 2011 .....	7
Postgraduate numbers by attendance type, 2011 .....	8
Postgraduate numbers by attendance mode, 2011 .....	8
CAMPUS .....	9
Total number of students at Monash University by campus for 2011, 2010 and 2009 .....	9
FACULTY .....	11
Postgraduate numbers by faculty by course type for 2011, 2010 and 2009 .....	11
Postgraduate numbers by faculty by campus, 2011 .....	13
HDR Postgraduate numbers by faculty by campus, 2011 .....	13
GPG Postgraduate numbers by faculty by campus, 2011 .....	13
COURSE LEVEL .....	14
Course type by course level for 2011, 2010 and 2009 .....	14
COMMENCING AND RETURNING STUDENT STATUS.....	15
Commencing and returning postgraduates by course type 2011, 2010 and 2009 .....	15
Commencing and returning postgraduates by course type by campus, 2011 .....	15
Commencing and returning by course type and by faculty 2011 .....	16
AGE OF POSTGRADUATES.....	18
Average age by course type by campus for 2011, 2010 and 2009 .....	18
INTERNATIONAL POSTGRADUATES.....	20
International and domestic postgraduates by campus for 2011, 2010 and 2009 .....	20
International postgraduates by course type, commencing and returning, by campus, 2011 .....	20
International postgraduates by course type by campus by year 2011, 2010 and 2009.....	21
International and domestic postgraduates by course type and faculty, 2011 .....	22
International postgraduates by faculty by course type for 2011, 2010 and 2009 .....	23
Country of residence of international postgraduates (numbers above 50) by course type, 2011 ...	25

SEX .....	26
Sex of postgraduates by course type for 2011, 2010 and 2009.....	26
Sex of postgraduates by campus, 2011 .....	26
Sex of postgraduates by course type and attendance type, 2011 .....	27
Sex of postgraduates by course type and faculty, 2011 .....	27
AUSTRALIAN ABORIGINAL AND TORRES STRAIT ISLANDER (ATSI) POSTGRADUATE ENROLMENTS.....	28
ATSI postgraduates by campus, 2011, 2010 and 2009.....	28
ATSI postgraduates by sex, 2011, 2010 and 2009.....	28
ATSI postgraduates by attendance type, 2011, 2010 and 2009 .....	28
ATSI postgraduates by faculty and course type, 2011, 2010 and 2009 .....	29
ATSI undergraduates by faculty, 2011, 2010 and 2009.....	29
FUNDING SOURCE .....	30
Funding source by campus and by course type, 2011 .....	30
ATTENDANCE TYPE .....	31
Attendance type by course type, 2011, 2010 and 2009.....	31
Attendance type by campus 2011, 2010 and 2009.....	32
ATTENDANCE MODE .....	33
Attendance mode by course type and by year 2011, 2010 and 2009 .....	33
Attendance mode by campus and by year 2011, 2010 and 2009 .....	34
STUDENT COURSE ATTEMPT LOCATION .....	35
Student course attempt location, 2011 .....	35
EQUITY GROUPS.....	36
Equity group by faculty, 2011 .....	36
Equity group by campus, 2011.....	36
Equity group by sex, 2011.....	37

## Key:

<b>HDR</b>	Higher degree by research refers to PhD including Professional Doctorates, and Masters by Research
<b>GPG</b>	Graduate postgraduate refers to the following degrees; Masters by Coursework, Postgraduate qualifying/preliminary, Graduate Diploma (new/existing area) and Graduate Certificate.
<b>Masters by Research</b>	Masters degree with a 66% or more research component.
<b>Masters by Coursework</b>	Masters degree with a less than 66% research component.
<b>Full-time</b>	Full-time enrolment
<b>Part-time</b>	Part-time enrolment
<b>Internal</b>	a course enrolment pattern in which all units of study are undertaken through attendance at the institution on a regular basis.
<b>External</b>	a course enrolment pattern in which all units of study involve special arrangements whereby lesson materials, assignments, etc. are delivered to the student, and any associated attendance at the institution is of an incidental, irregular, special or voluntary nature.
<b>Multi-Modal</b>	a course enrolment pattern in which at least one unit of study is undertaken by internal mode and at least one unit of study is undertaken by external mode of attendance.
<b>RTS</b>	Research Training Scheme
<b>CSP</b>	Commonwealth Supported Place
<b>International</b>	Overseas/ International postgraduate
<b>Domestic</b>	Domestic/ Local postgraduate
<b>T&amp;R</b>	Teaching and Research
<b>Low SES</b>	Low socio-economic status as defined by ABS, Australian
<b>Student course attempt location</b>	Student course attempt location is the location, typically the campus, from where the student's course is offered. It may be interpreted as the location where a student is enrolled in a course.

Note: non-award student numbers have been excluded

# Executive summary

## Student numbers

During 2011, there were 62,828 students enrolled at Monash University and of these 17,003 (27%) were postgraduate.

The Clayton campus had the highest number of postgraduate enrolments in 2011 with 8,026 postgraduates, compared to 5,869 postgraduates at Caulfield campus and 1,205 postgraduates at Gippsland campus. There were 13 postgraduates enrolled at Berwick campus and 59 at South Africa campus.

### Total number of students at Monash University by campus, 2011

	Clayton	Caulfield	Peninsula	Gippsland	Parkville	Berwick	Sunway	South Africa	Total
Postgraduate	8026	5869	852	1205	647	13	332	59	<b>17003</b>
Undergraduate	19767	8371	3412	2964	1027	2036	5326	2922	<b>45825</b>
Total	27793	14240	4264	4169	1674	2049	5658	2981	<b>62828</b>

Source: Monash University Planning and Statistics, as at 7 June 2012

## Faculty

The Faculty of Business and Economics had the highest number of postgraduates in 2011 with 4083 students, followed by the Faculty of Medicine, Nursing and Health Sciences with 3710 postgraduates and then the Faculty of Education with an enrolment of 2932 postgraduates.

### Postgraduate numbers by faculty, 2011

Faculty	Total
Art, Design and Architecture	497
Arts	1670
Business and Economics	4083
Education	2932
Engineering	932
Information Technology	1065
Law	923
Medicine, Nursing and Health Sciences	3710
Pharmacy and Pharmaceutical Sciences	647
Science	522
T&R	22
<b>Total</b>	<b>17003</b>

Source: Monash University Planning and Statistics, as at 7 June 2012

## Course level

HDRs comprised 26% of the postgraduate population and GPGs 74%.

### Postgraduate numbers by course type, 2011

	Higher degree by research	Graduate/postgraduate	Total
Postgraduate Numbers	4463	12540	<b>17003</b>

Source: Monash University Planning and Statistics, as at 7 June 2012

## Commencing and returning

Of the 4,463 HDRs, 24% were commencing in 2011, while GPG numbers were fairly evenly divided between commencing and returning.

### Postgraduate numbers by commencing and returning, 2011

	Commencing	Returning	Total
Higher degree by research	1053	3410	4463
Graduate/postgraduate	6010	6530	12540

Source: Monash University Planning and Statistics, as at 7 June 2012

## Age

While the average age of postgraduates in 2011 was 32 years, the largest proportion (30%) of HDR postgraduates were in the age range of 25 to 29 years. Of the GPGs, 33% were in the age range of 20 to 24 years. In 2011 the youngest GPG was 18 years old and there was one HDR aged 84.

## International students

International postgraduates made up 31% of the HDR population and 32% of the GPG population. The largest number of international postgraduates were enrolled in the Faculty of Business and Economics where international postgraduates exceeded the number of domestic postgraduates.

### Postgraduate numbers by international/domestic, 2011

	International	Domestic	Total
Higher degree by research	1380	3083	4463
Graduate/postgraduate	4070	8470	12540

Source: Monash University Planning and Statistics, as at 7 June 2012

## Sex

There were substantially more female postgraduates than male postgraduates in both HDR and GPG during 2011. Female postgraduates comprised 60% of the total postgraduate population.

### Postgraduate numbers by sex, 2011

Sex	Female	Male	Total
Higher degree by research	2414	2049	4463
Graduate/postgraduate	7800	4740	12540

Source: Monash University Planning and Statistics, as at 7 June 2012

## Aboriginal and Torres Strait Islander

There were 49 Aboriginal and Torres Strait Islander (ATSI) postgraduates enrolled at Monash in 2011, 18 HDRs and 31 GPGs. While the Faculty of Education had 15 ATSI students, the highest number of any faculty, the Faculty of Engineering had no postgraduates identified as Aboriginal or Torres Strait Islander in 2011.

## Funding source

While the majority of HDRs (2,841) were supported by Research Training Scheme funds there were 1,383 international fee-paying HDRs. Of the 12,540 GPGs, 3930 held Commonwealth Supported Places (CSP), 4,077 were international full-fee paying students and 4,533 were domestic full-fee paying students.

## Attendance type

In 2011 more than twice as many HDRs were studying full-time as opposed to part-time; however, more GPGs were studying part-time rather than full-time.

### Postgraduate numbers by attendance type, 2011

Attendance Type	Full-time	Part-time	Total
Higher degree by research	3117	1346	4463
Graduate/postgraduate	5787	6753	12540

Source: Monash University Planning and Statistics, as at 7 June 2012

## Attendance mode

The majority (91%) of HDRs and 58% of GPGs were enrolled internally. A substantial proportion (32%) of GPGs were also enrolled externally.

### Postgraduate numbers by attendance mode, 2011

Attendance Mode	Internal	External	Multi-modal	Total
Higher degree by research	4153	260	50	4463
Graduate/postgraduate	7248	4040	1252	12540

Source: Monash University Planning and Statistics, as at 7 June 2012

## Student course attempt location

The Faculties of Law and Medicine, Nursing and Health Sciences had postgraduates based at locations other than the main Monash campuses. Eighty-eight percent of Law postgraduates were based in the city while 22% of postgraduates from the Medicine, Nursing and Health Sciences Faculty were based at various locations around Victoria, including hospitals and research centres.

## Equity groups

2.6% of postgraduates identified themselves as having a disability and 10% resided in an area of low socio-economic status.



# Campus

In 2011, 27% of students at Monash were postgraduate.

The percentage of students at each campus that were postgraduate in 2011 was:

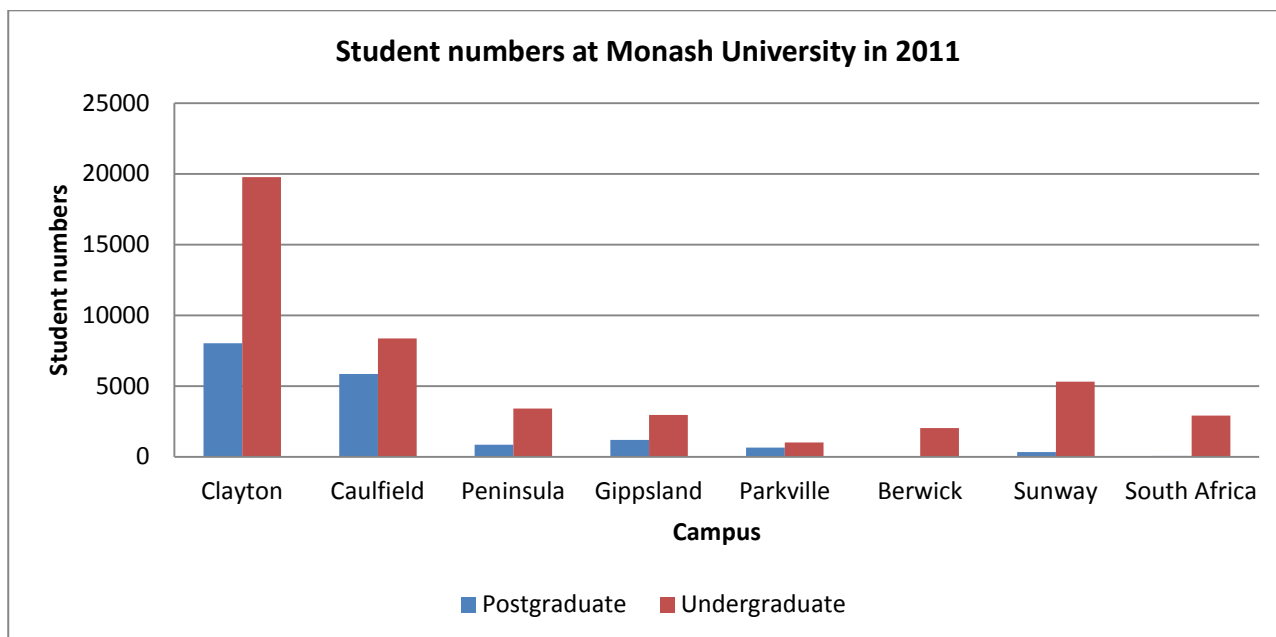
- 29% of students at Clayton
- 41% of students at Caulfield
- 20% of students at Peninsula
- 29% of students at Gippsland
- 39% of students at Parkville
- 0.6% of students at Berwick
- 6% of students at Sunway
- 2% of students at South Africa

## Total number of students at Monash University by campus for 2011, 2010 and 2009

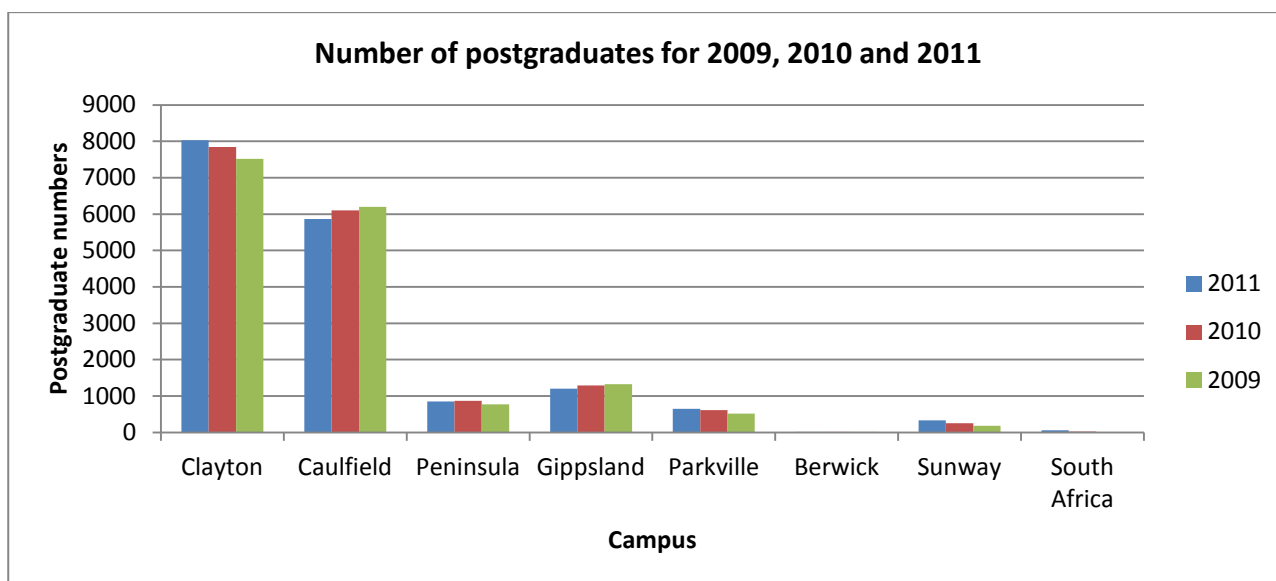
	Clayton	Caulfield	Peninsula	Gippsland	Parkville	Berwick	Sunway	South Africa	Total
<b>2011</b>									
Postgraduate	8026	5869	852	1205	647	13	332	59	<b>17003</b>
Undergraduate	19767	8371	3412	2964	1027	2036	5326	2922	<b>45825</b>
Total	27793	14240	4264	4169	1674	2049	5658	2981	<b>62828</b>
<b>2010</b>									
Postgraduate	7843	6103	868	1295	618	17	250	28	<b>17022</b>
Undergraduate	19549	8369	3445	2962	1056	1991	5097	2363	<b>44832</b>
Total	27392	14472	4313	4257	1674	2008	5347	2391	<b>61854</b>
<b>2009</b>									
Postgraduate	7522	6196	772	1325	520	19	183	1	<b>16538</b>
Undergraduate	18916	7959	3098	3065	1064	1970	4606	2042	<b>42720</b>
Total	26438	14155	3870	4390	1584	1989	4789	2043	<b>59258</b>

Source: Monash University Planning and Statistics, as at 7 June 2012, 18 July 2011 and 15 June 2010.

The highest number (8026) of postgraduates were enrolled at the Clayton campus while the largest proportion (41%) of postgraduates at a given campus were enrolled at Caulfield campus.



Between 2009 and 2010 the overall number of postgraduates at Monash University increased, then by 2011 had slightly decreased. While there were increases in postgraduate numbers at Clayton, Parkville, Sunway and South Africa campuses, postgraduate numbers declined at Caulfield, Gippsland and Berwick campuses.



# Faculty

In 2011:

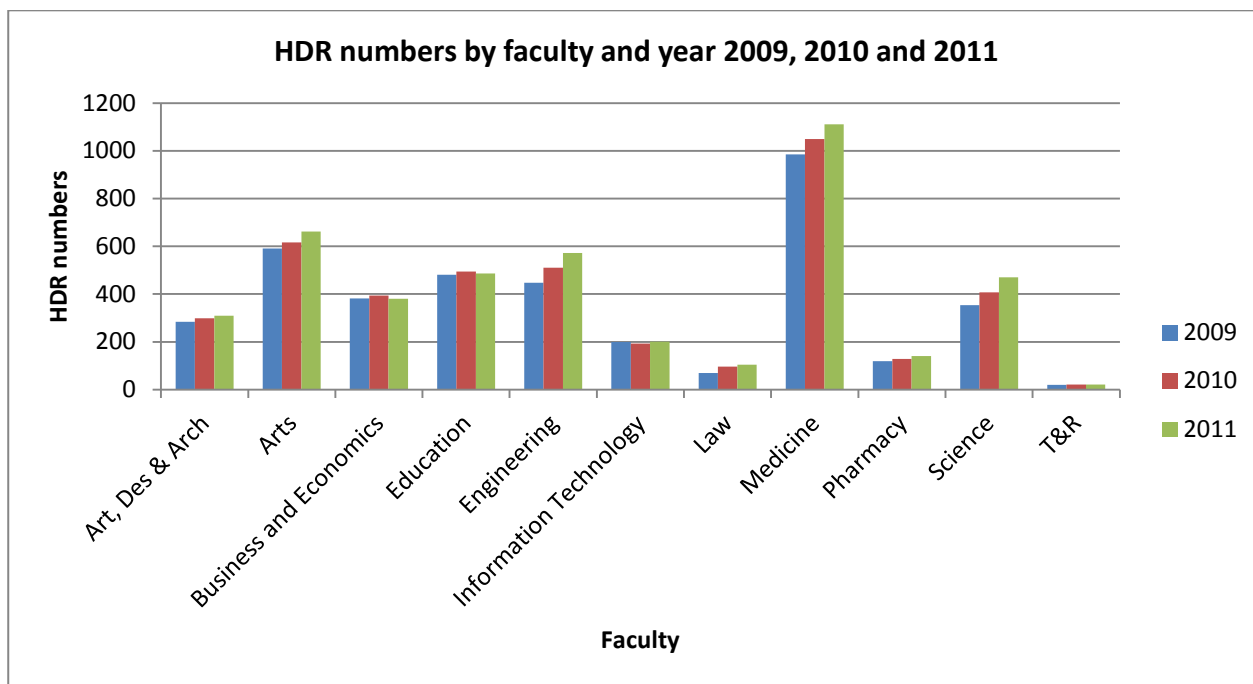
- 24% of postgraduates were enrolled through the Faculty of Business and Economics
- 22% of postgraduates were enrolled through the Faculty of Medicine, Nursing and Health Sciences
- 17% of postgraduates were enrolled through the Faculty of Education

## Postgraduate numbers by faculty by course type for 2011, 2010 and 2009

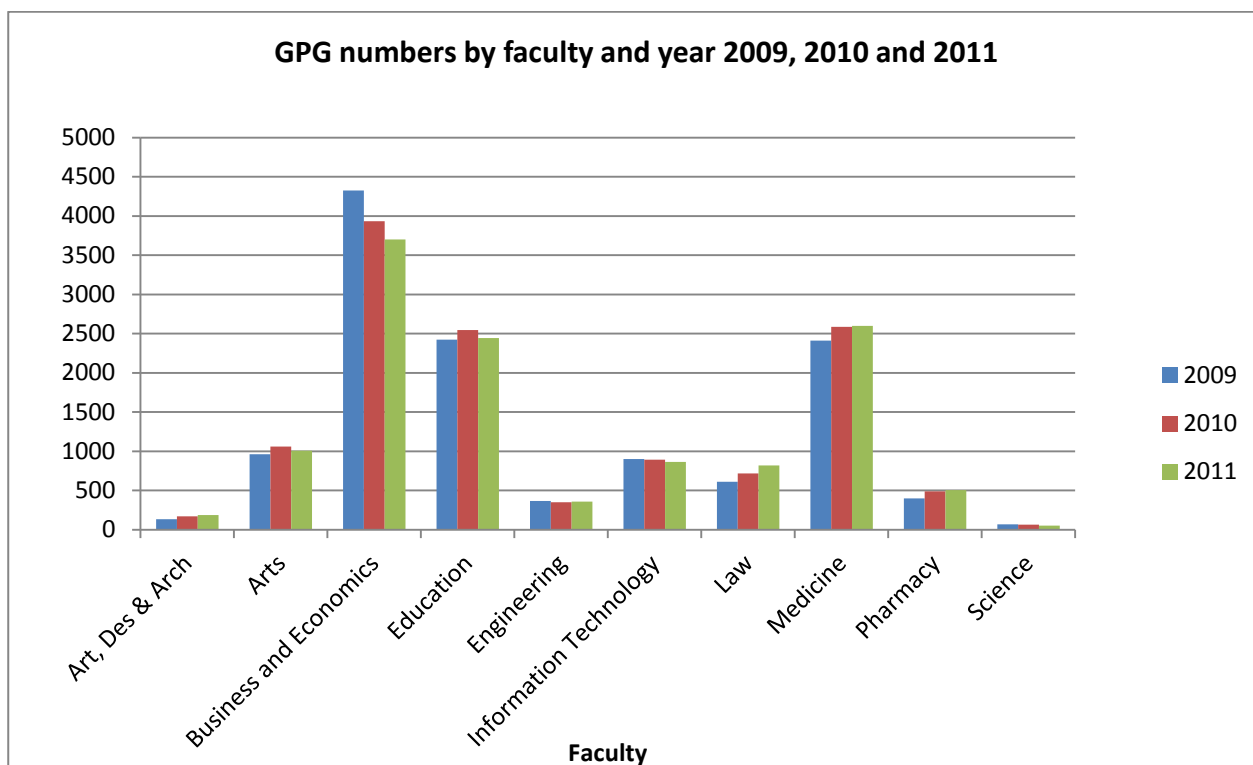
Faculty		Higher degree research	Graduate postgraduate	Total
<b>Art, Design and Architecture</b>	2011	310	187	497
	2010	299	169	468
	2009	284	133	417
<b>Arts</b>	2011	662	1008	1670
	2010	616	1062	1678
	2009	591	961	1552
<b>Business and Economics</b>	2011	381	3702	4083
	2010	394	3933	4327
	2009	382	4324	4706
<b>Education</b>	2011	487	2445	2932
	2010	495	2547	3042
	2009	481	2425	2906
<b>Engineering</b>	2011	572	360	932
	2010	511	351	862
	2009	447	367	814
<b>Information Technology</b>	2011	201	864	1065
	2010	193	892	1085
	2009	200	902	1102
<b>Law</b>	2011	105	818	923
	2010	96	716	812
	2009	70	612	682
<b>Medicine, Nursing and Health Sciences</b>	2011	1111	2599	3710
	2010	1049	2586	3635
	2009	985	2411	3396
<b>Pharmacy and Pharmaceutical Sciences</b>	2011	141	506	647
	2010	129	489	618
	2009	119	401	520
<b>Science</b>	2011	471	51	522
	2010	408	66	474
	2009	354	69	423
<b>T&amp;R</b>	2011	22	0	22
	2010	21	0	21
	2009	20	0	20

Source: Monash University Planning and Statistics, as at 7 June 2012, 18 July 2011 and 15 June 2010.

HDR numbers increased slightly in each faculty over the past three years except in the Faculties of Business and Economics, Education and Information Technology.



GPG numbers increased in the Faculties of Art, Design and Architecture, Law, Medicine, Nursing and Health Sciences and Pharmacy and Pharmaceutical Sciences and decreased in Business and Economics, Information Technology and Science.



Business and Economics postgraduates formed 60% of the postgraduate population at Caulfield, 42% at Sunway and 100% at Berwick. The Faculty of Medicine, Nursing and Health Sciences had the majority of their postgraduates located at Clayton campus (2,403) with smaller numbers at Caulfield (530), Peninsula (505) and Gippsland (226).

### Postgraduate numbers by faculty by campus, 2011

	Clayton	Caulfield	Peninsula	Gippsland	Parkville	Berwick	Sunway	South Africa	Total
Art, Des and Architecture		448		49					497
Arts	1071	508		68			13	10	1670
Business and Economics	239	3497	2	143		13	140	49	4083
Education	2154		345	418			15		2932
Engineering	720			159			53		932
Information Technology	61	885		97			22		1065
Law	923								923
Medicine	2403	530	505	226			46		3710
Pharmacy					647				647
Science	435	1		45			41		522
T&R	20						2		22
<b>Total</b>	<b>8026</b>	<b>5869</b>	<b>852</b>	<b>1205</b>	<b>647</b>	<b>13</b>	<b>332</b>	<b>59</b>	<b>17003</b>

Source: Monash University Planning and Statistics, as at 7 June 2012

### HDR Postgraduate numbers by faculty by campus, 2011

	Clayton	Caulfield	Peninsula	Gippsland	Parkville	Berwick	Sunway	South Africa	Total
Art, Des and Architecture		299		11					310
Arts	503	113		23			13	10	662
Business and Economics	132	190	2	12		13	32		381
Education	356		93	38					487
Engineering	519						53		572
Information Technology	57	87		35			22		201
Law	105								105
Medicine	921	77	55	15			43		1111
Pharmacy					141				141
Science	397	1		32			41		471
T&R	20						2		22
<b>Total</b>	<b>3010</b>	<b>767</b>	<b>150</b>	<b>166</b>	<b>141</b>	<b>13</b>	<b>206</b>	<b>10</b>	<b>4463</b>

Source: Monash University Planning and Statistics, as at 7 June 2012

### GPG Postgraduate numbers by faculty by campus, 2011

	Clayton	Caulfield	Peninsula	Gippsland	Parkville	Berwick	Sunway	South Africa	Total
Art, Des and Architecture		149		38					187
Arts	568	395		45					1008
Business and Economics	107	3307		131			108	49	3702
Education	1798		252	380			15		2445
Engineering	201			159					360
Information Technology	4	798		62					864
Law	818								818
Medicine	1482	453	450	211			3		2599
Pharmacy					506				506
Science	38			13					51
T&R									
<b>Total</b>	<b>5016</b>	<b>5102</b>	<b>702</b>	<b>1039</b>	<b>506</b>		<b>126</b>	<b>49</b>	<b>12540</b>

Source: Monash University Planning and Statistics, as at 7 June 2012

## Course level

In 2011:

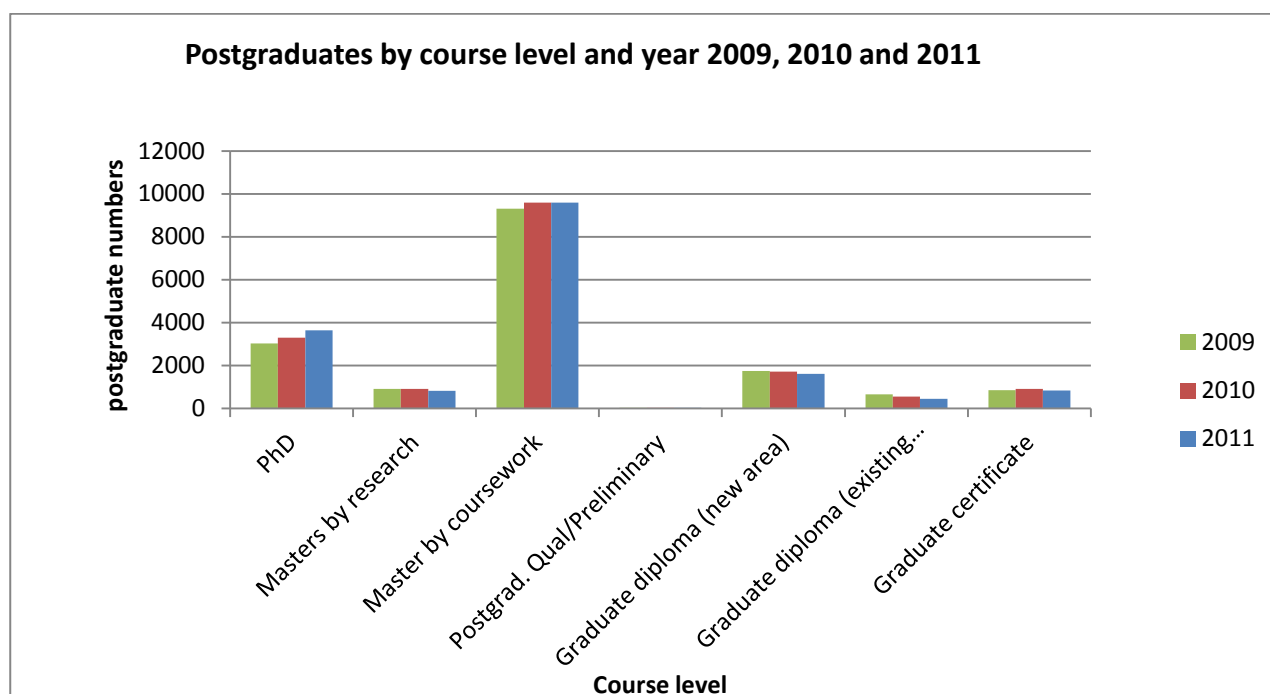
- 82% of HDRs were enrolled in PhDs
- 18% of HDRs were enrolled in Masters by research
- 77% of GPGs were enrolled in the Masters by coursework
- 13% of GPGs were enrolled in the Graduate diploma new area

### Course type by course level for 2011, 2010 and 2009

Course level	2011	2010	2009
PhD	3645	3295	3025
Masters by research	818	916	908
<b>HDR total</b>	<b>4463</b>	<b>4211</b>	<b>3933</b>
Master by coursework	9603	9593	9320
Postgrad. Qual/Preliminary	38	38	31
Graduate diploma (new area)	1615	1711	1754
Graduate diploma (existing area)	452	557	652
Graduate certificate	832	912	848
<b>GPG total</b>	<b>12540</b>	<b>12811</b>	<b>12605</b>
<b>Total</b>	<b>17003</b>	<b>17022</b>	<b>16538</b>

Source: Monash University Planning and Statistics, as at 7 June 2012, 18 July 2011 and 15 June 2010.

In 2011 the majority (81%) of HDRs were enrolled in a PhD program and the majority (76%) of GPGs were enrolled in a Masters by coursework degree.



# Commencing and returning student status

In 2011:

- 41.5% of postgraduates were commencing
- 58.5% of postgraduates were returning
- 24% of HDR were commencing
- 76% of HDR were returning
- 48% of GPG were commencing
- 52% of GPG were returning

## Commencing and returning postgraduates by course type 2011, 2010 and 2009

	Commencing	Returning	Total
<b>2011</b>			
Higher degree by research	1053	3410	4463
Graduate/postgraduate	6010	6530	12540
<b>Total</b>	<b>7063</b>	<b>9940</b>	<b>17003</b>
<b>2010</b>			
Higher degree by research	1145	3066	4211
Graduate/postgraduate	6124	6687	12811
<b>Total</b>	<b>7269</b>	<b>9753</b>	<b>17022</b>
<b>2009</b>			
Higher degree by research	1138	2795	3933
Graduate/postgraduate	6384	6221	12605
<b>Total</b>	<b>7522</b>	<b>9016</b>	<b>16538</b>

Source: Monash University Planning and Statistics, as at 7 June 2012, 18 July 2011 and 15 June 2010.

In 2011:

- 76% of commencing postgraduates at Clayton were GPG
- 94% of commencing postgraduates at Caulfield were GPG
- 91% of commencing postgraduates at Peninsula were GPG
- 92.5% of commencing postgraduates at Gippsland were GPG
- 90% of commencing postgraduates at Parkville were GPG

## Commencing and returning postgraduates by course type by campus, 2011

	Clayton	Caulfield	Peninsula	Gippsland	Parkville	Berwick	Sunway	South Africa	Total
HDR Com.	715	144	37	39	34	3	76	5	1053
HDR Ret.	2295	623	113	127	107	10	130	5	3410
GPG Com.	2319	2413	408	482	306		68	14	6010
GPG Ret.	2697	2689	294	557	200		58	35	6530
<b>Total</b>	<b>8026</b>	<b>5869</b>	<b>852</b>	<b>1205</b>	<b>647</b>	<b>13</b>	<b>332</b>	<b>59</b>	<b>17003</b>

Source: Monash University Planning and Statistics, as at 7 June 2012

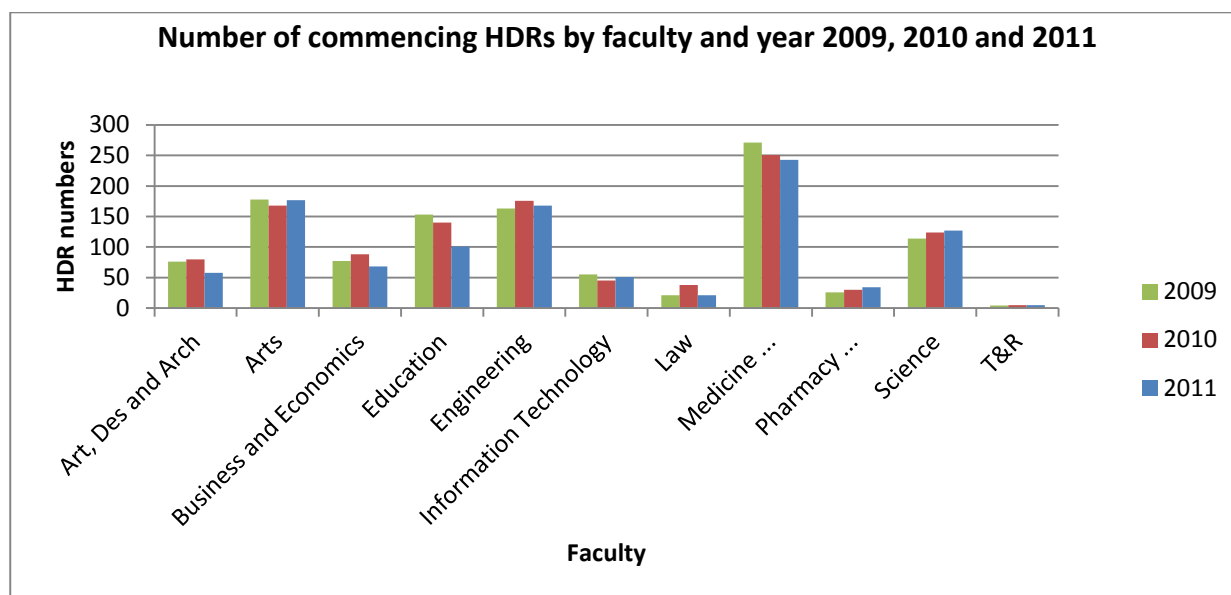
In 2011 there were more returning HDR postgraduates than commencing in each faculty. Returning GPGs were greater than commencing GPGs in all Faculties except Education and Pharmacy and Pharmaceutical Sciences.

### Commencing and returning by course type and by faculty 2011

	Higher degree research by commencing	Higher degree by research returning	Graduate/postgraduate commencing	Graduate/postgraduate returning
Art, Design and Architecture	58	252	92	95
Arts	177	485	496	512
Business and Economics	68	313	1754	1948
Education	101	386	1388	1057
Engineering	168	404	146	214
Information Technology	51	150	380	484
Law	21	84	299	519
Medicine, Nursing and Health Sciences	243	868	1131	1468
Pharmacy and Pharmaceutical Sciences	34	107	306	200
Science	127	344	18	33
T&R	5	17		

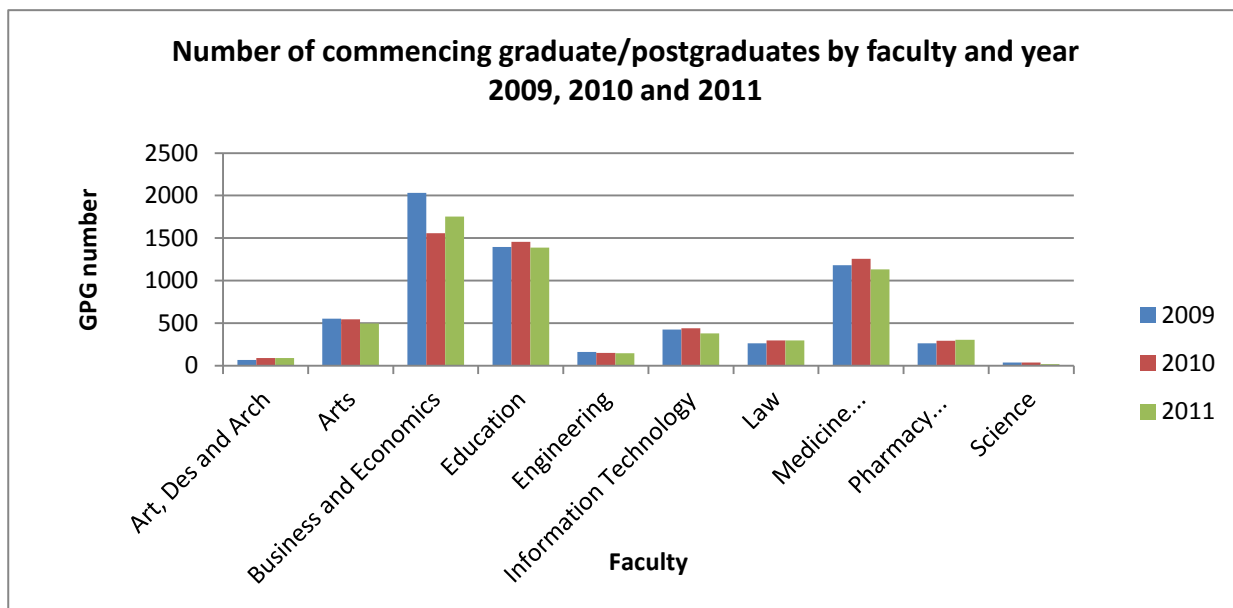
Source: Monash University Planning and Statistics, as at 7 June 2012

The Faculty of Medicine, Nursing and Health Sciences had the largest number of commencing HDRs in 2011. Between 2009 and 2011 the overall number of commencing HDRs increased in the faculties of Pharmacy and Pharmaceutical Sciences, Science and T&R. Commencing HDR numbers decreased in the faculties of Education and Medicine, Nursing and Health Sciences.





The Faculty of Business and Economics had the largest number of commencing GPGs in 2011. The Faculties of Arts, Engineering and Science experienced an overall decline in commencing GPGs from 2009-2011 while for Art, Design and Architecture, Law and Pharmacy and Pharmaceutical Sciences this figure increased.



Pharmacy and Pharmaceutical Sciences was the only faculty in which both commencing HDR and GPG numbers increased over the three year time period.

# Age of postgraduates

In 2011:

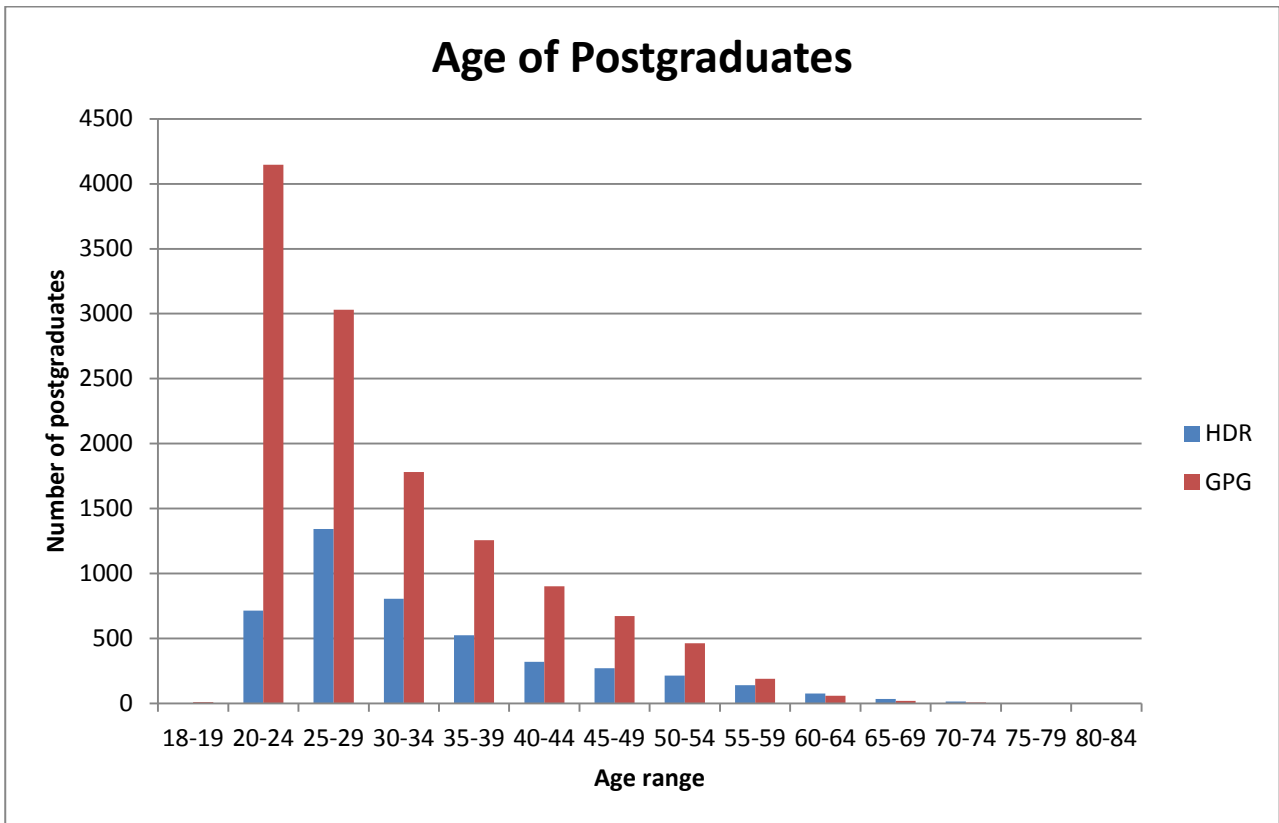
- The average age of postgraduates at Monash was 32
- The average age of HDRs at Monash was 34
- The average age of GPGs at Monash was 31
- The highest average age of a postgraduate group was at the Peninsula campus, with an HDR average age of 40.

The lowest average age of a postgraduate group was at the Sunway campus, with a GPG average age of 25 and at South Africa campus, the HDR average age was also 25.

## Average age by course type by campus for 2011, 2010 and 2009

	Clayton	Caulfield	Peninsula	Gippsland	Parkville	Berwick	Sunway	South Africa	Overall average age
<b>2011</b>									
HDR	33	38	40	37	27	33	30	25	<b>34</b>
GPG	34	27	33	35	28	-	25	38	<b>31</b>
<b>Overall average</b>	<b>33</b>	<b>29</b>	<b>35</b>	<b>35</b>	<b>28</b>	<b>33</b>	<b>28</b>	<b>35</b>	<b>32</b>
<b>2010</b>									
HDR	33	39	40	38	28	35	31	25	<b>34</b>
GPG	34	28	34	35	28	-	26	35	<b>31</b>
<b>Overall average</b>	<b>33</b>	<b>29</b>	<b>35</b>	<b>35</b>	<b>28</b>	<b>35</b>	<b>29</b>	<b>33</b>	<b>32</b>
<b>2009</b>									
HDR	33	39	41	38	28	34	30	-	<b>35</b>
GPG	34	28	35	36	28	-	26	31	<b>31</b>
<b>Overall average</b>	<b>33</b>	<b>34</b>	<b>38</b>	<b>37</b>	<b>28</b>	<b>34</b>	<b>28</b>	<b>31</b>	<b>33</b>

Source: Monash University Planning and Statistics, as at 15 June 2010 and 18 July 2011 and 7 June 2012



While the average age of postgraduates was 32 years in 2011, almost a third (30%) of HDRs were in the age range of 25 to 29 years with numbers decreasing as age increased. The oldest HDR in 2011 was 84 years of age.

Approximately one third of GPGs (33%) were in the age range of 20 to 24 years followed by 24% in the 25 to 29 year old range. Ages of GPGs ranged from 18 to 81 years old.

# International postgraduates

In 2011:

- 32% of postgraduates were international students
- 22% of postgraduates on Clayton campus were international students
- 50% of postgraduates on Caulfield campus were international students
- 19% of postgraduates on Peninsula campus were international students
- 14% of postgraduates on Gippsland campus were international students

While the postgraduate population at Caulfield campus was equally divided between domestic and international students, there were three times as many domestic postgraduates at Clayton as there were international postgraduates during 2011.

## International and domestic postgraduates by campus for 2011, 2010 and 2009

	Clayton	Caulfield	Peninsula	Gippsland	Parkville	Berwick	Sunway	South Africa	Total
<b>2011</b>									
Domestic	6283	2936	690	1037	597	9	1		<b>11553</b>
International	1743	2933	162	168	50	4	331	59	<b>5450</b>
<b>Total</b>	<b>8026</b>	<b>5869</b>	<b>852</b>	<b>1205</b>	<b>647</b>	<b>13</b>	<b>332</b>	<b>59</b>	<b>17003</b>
<b>2010</b>									
Domestic	6080	3139	684	1091	575	12	1	0	<b>11582</b>
International	1763	2964	184	204	43	5	249	28	<b>5440</b>
<b>Total</b>	<b>7843</b>	<b>6103</b>	<b>868</b>	<b>1295</b>	<b>618</b>	<b>17</b>	<b>250</b>	<b>28</b>	<b>17022</b>
<b>2009</b>									
Domestic	5753	3107	606	1092	483	15	1	0	<b>11057</b>
International	1769	3089	166	233	37	4	182	1	<b>5481</b>
<b>Total</b>	<b>7522</b>	<b>6196</b>	<b>772</b>	<b>1325</b>	<b>520</b>	<b>19</b>	<b>183</b>	<b>1</b>	<b>16538</b>

Source: Monash University Planning and Statistics, as at 7 June 2012, 18 July 2011 and 15 June 2010.

The majority (75%) of the international postgraduate population in 2011 were GPGs. Of the 50 international postgraduates at Parkville, 39 were HDRs.

## International postgraduates by course type, commencing and returning, by campus, 2011

	Clayton	Caulfield	Peninsula	Gippsland	Parkville	Berwick	Sunway	South Africa	Total
HDR Com	211	32	7	17	12	1	76	5	
HDR Ret	657	138	17	43	27	3	129	5	
<b>HDR Total</b>	<b>868</b>	<b>170</b>	<b>24</b>	<b>60</b>	<b>39</b>	<b>4</b>	<b>205</b>	<b>10</b>	<b>1380</b>
GPG Com	451	1536	60	20	9		68	14	
GPG Ret	424	1227	78	88	2		58	35	
<b>GPG Total</b>	<b>875</b>	<b>2763</b>	<b>138</b>	<b>108</b>	<b>11</b>		<b>126</b>	<b>49</b>	<b>4070</b>
<b>Total</b>	<b>1743</b>	<b>2933</b>	<b>162</b>	<b>168</b>	<b>50</b>	<b>4</b>	<b>331</b>	<b>59</b>	<b>5450</b>

Source: Monash University Planning and Statistics, as at 7 June 2012

Between 2009 and 2011 numbers of international postgraduates decreased at Clayton, Caulfield and Gippsland campuses. The number of international postgraduates at Parkville, Sunway and South Africa increased during this time.

#### International postgraduates by course type by campus by year 2011, 2010 and 2009

	Clayton	Caulfield	Peninsula	Gippsland	Parkville	Berwick	Sunway	South Africa	Total
<b>2011</b>									
HDR	868	170	24	60	39	4	205	10	1380
GPG	875	2763	138	108	11		126	49	4070
<b>Total</b>	<b>1743</b>	<b>2933</b>	<b>162</b>	<b>168</b>	<b>50</b>	<b>4</b>	<b>331</b>	<b>59</b>	<b>5450</b>
<b>2010</b>									
HDR	813	161	21	57	37	5	146	6	1246
GPG	950	2803	163	147	6		103	22	4194
<b>Total</b>	<b>1763</b>	<b>2964</b>	<b>184</b>	<b>204</b>	<b>43</b>	<b>5</b>	<b>249</b>	<b>28</b>	<b>5440</b>
<b>2009</b>									
HDR	698	135	17	59	31	4	100	0	1044
GPG	1071	2954	149	174	6	0	82	1	4437
<b>Total</b>	<b>1769</b>	<b>3089</b>	<b>166</b>	<b>233</b>	<b>37</b>	<b>4</b>	<b>182</b>	<b>1</b>	<b>5481</b>

Source: Monash University Planning and Statistics, as at 15 June 2010, 18 July 2011 and 7 June 2012

In 2011, the proportion of international postgraduates in each faculty was:

- 24% in Art, Design and Architecture
- 28% in Arts
- 55% in Business and Economics
- 28% in Education
- 35% in Engineering
- 67% in Information Technology
- 6% in Law
- 12% in Medicine, Nursing and Health Sciences
- 8% in Pharmacy and Pharmaceutical Sciences
- 39% in Science
- 23% in T&R

During 2011, the largest number of postgraduates were enrolled in the Faculty of Business and Economics (4,083) and more than half of these (2,231) were international students, most of whom were GPGs (2,041).

In the Faculty of Information Technology, in 2011, there were twice as many international postgraduates (717) as there were domestic postgraduates (348), and the majority of these international students were GPGs (600). In Information Technology there were more international (117) than domestic (84) HDRs.

The faculty with the lowest number of international HDR postgraduates was Law with 17 students, followed by Art, Design and Architecture with 18 students.

#### International and domestic postgraduates by course type and faculty, 2011

		Higher degree research	Graduate/postgraduate	Total
Art, Design and Architecture	Domestic	292	86	<b>378</b>
	International	18	101	<b>119</b>
Arts	Domestic	515	689	<b>1204</b>
	International	147	319	<b>466</b>
Business and Economics	Domestic	191	1661	<b>1852</b>
	International	190	2041	<b>2231</b>
Education	Domestic	364	1737	<b>2101</b>
	International	123	708	<b>831</b>
Engineering	Domestic	281	325	<b>606</b>
	International	291	35	<b>326</b>
Information Technology	Domestic	84	264	<b>348</b>
	International	117	600	<b>717</b>
Law	Domestic	88	778	<b>866</b>
	International	17	40	<b>57</b>
Medicine, Nursing and Health Sciences	Domestic	879	2385	<b>3264</b>
	International	232	214	<b>446</b>
Pharmacy and Pharmaceutical Sciences	Domestic	102	495	<b>597</b>
	International	39	11	<b>50</b>
Science	Domestic	270	50	<b>320</b>
	International	201	1	<b>202</b>
T&R	Domestic	17	0	<b>17</b>
	International	5	0	<b>5</b>
<b>Total</b>		<b>4463</b>	<b>12540</b>	<b>17003</b>

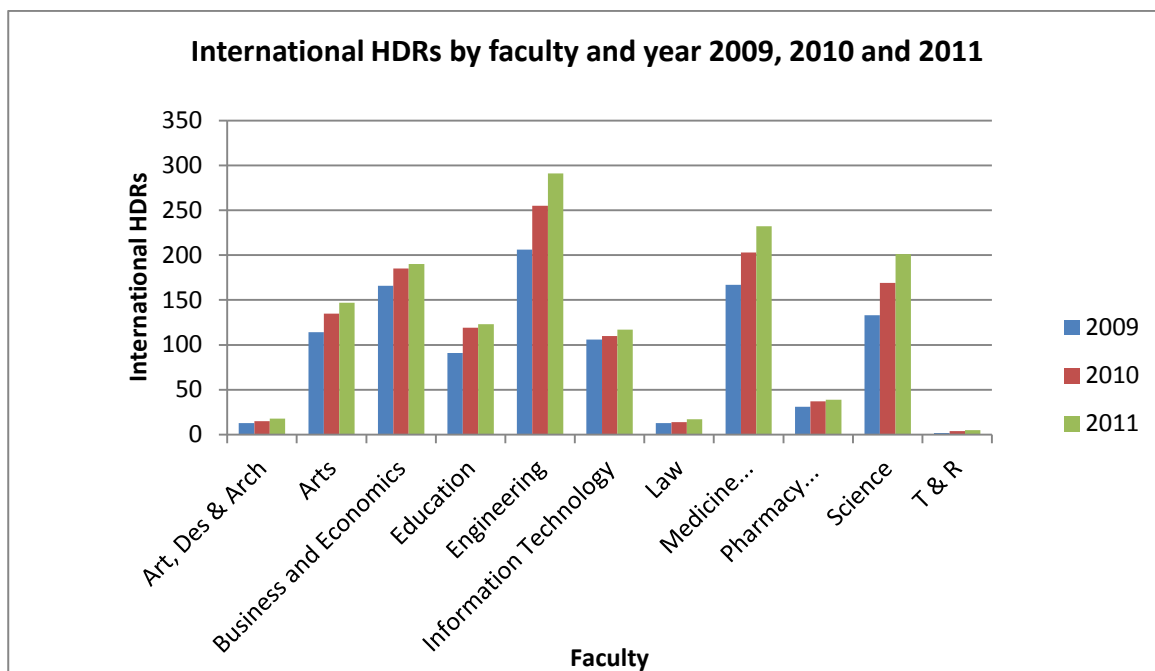
Source: Monash University Planning and Statistics, as at 7 June 2012

## International postgraduates by faculty by course type for 2011, 2010 and 2009

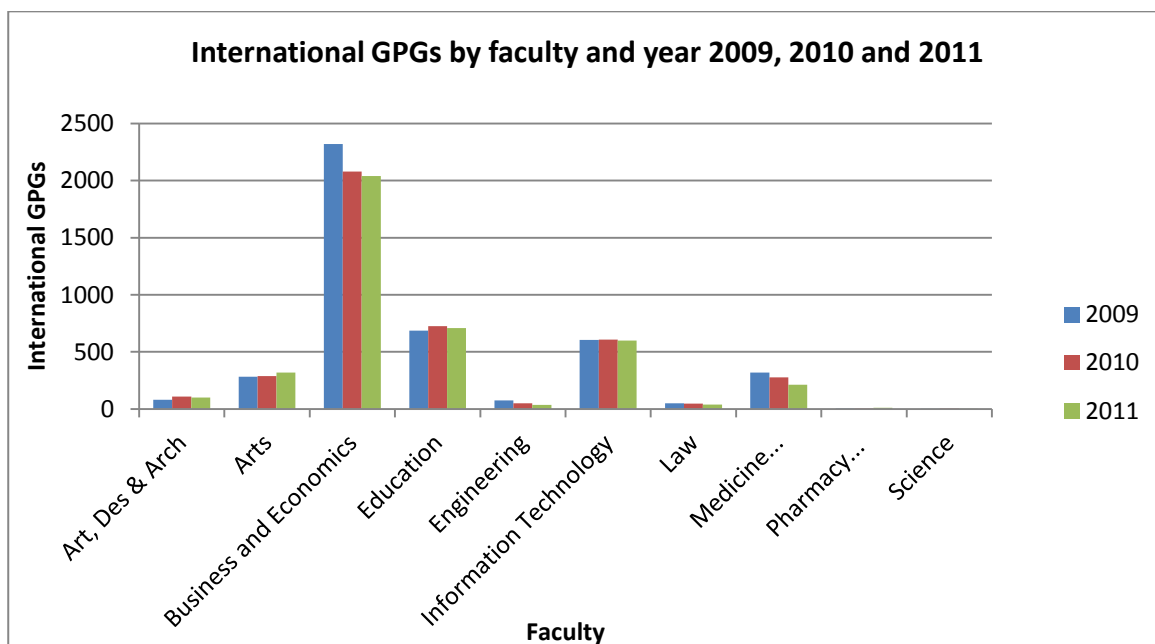
Faculty		Higher degree research	Graduate postgraduate
<b>Art, Design and Architecture</b>	2011	18	101
	2010	15	108
	2009	13	81
<b>Arts</b>	2011	147	319
	2010	135	288
	2009	114	283
<b>Business and Economics</b>	2011	190	2041
	2010	185	2079
	2009	166	2321
<b>Education</b>	2011	123	708
	2010	119	726
	2009	91	687
<b>Engineering</b>	2011	291	35
	2010	255	50
	2009	206	76
<b>Information Technology</b>	2011	117	600
	2010	110	609
	2009	106	604
<b>Law</b>	2011	17	40
	2010	14	48
	2009	13	50
<b>Medicine, Nursing and Health Sciences</b>	2011	232	214
	2010	203	276
	2009	167	318
<b>Pharmacy and Pharmaceutical Sciences</b>	2011	39	11
	2010	37	6
	2009	31	6
<b>Science</b>	2011	201	1
	2010	169	4
	2009	133	3
<b>T&amp;R</b>	2011	5	0
	2010	4	0
	2009	2	0

Source: Monash University Planning and Statistics, as at 15 June 2010, 18 July 2011 and 7 June 2012

Overall the number of international HDRs increased in every faculty between 2009 and 2011.



Between 2009 and 2011, the number of international GPGs increased in the Faculty of Arts but decreased overall in Business and Economics, Engineering, Law, Medicine, Nursing and Health Sciences and Pharmacy and Pharmaceutical Sciences.





In 2011:

- Approximately one third, 35% of international postgraduates were from China (1,922).
- Malaysia had the highest number of international HDRs (234), followed by China (135) and India (132).
- China had the highest number of international GPGs (1,787), followed by Singapore (362) and Hong Kong (299).

**Country of residence of international postgraduates (numbers above 50) by course type, 2011**

	Higher degree research	Graduate/ postgraduate	<b>Total</b>
Bangladesh	88	27	<b>115</b>
China (excl SARs and Taiwan)	135	1787	<b>1922</b>
Hong Kong (SAR of China)	7	299	<b>306</b>
India	132	152	<b>284</b>
Indonesia	84	239	<b>323</b>
Iran	46	28	<b>74</b>
Japan	10	44	<b>54</b>
Korea	12	38	<b>50</b>
Malaysia	284	208	<b>492</b>
Saudi Arabia	43	80	<b>123</b>
Singapore	65	362	<b>427</b>
South Africa	16	56	<b>72</b>
Sri Lanka	55	27	<b>82</b>
Thailand	18	81	<b>99</b>
United States of America	24	32	<b>56</b>
Viet Nam	39	153	<b>192</b>

Source: Monash University Planning and Statistics, as at 7 June 2012

# Sex

In 2011:

- 60% of postgraduates were female
- 40% of postgraduates were male
- 54% of HDRs were female
- 46% of HDRs were male
- 62% of GPGs were female
- 38% of GPGs were male

## Sex of postgraduates by course type for 2011, 2010 and 2009

	Female	Male	Total
<b>2011</b>			
Higher degree by research	2414	2049	4463
Graduate/postgraduate coursework	7800	4740	12540
<b>Total</b>	<b>10214</b>	<b>6789</b>	<b>17003</b>
<b>2010</b>			
Higher degree by research	2280	1931	4211
Graduate/postgraduate coursework	7901	4910	12811
<b>Total</b>	<b>10181</b>	<b>6841</b>	<b>17022</b>
<b>2009</b>			
Higher degree by research	2185	1748	3933
Graduate/postgraduate coursework	7650	4955	12605
<b>Total</b>	<b>9835</b>	<b>6703</b>	<b>16538</b>

Source: Monash University Planning and Statistics, as at 15 June 2010, 18 July 2011 and 7 June 2012

In 2011 there were more female postgraduates than males at every campus except Berwick and south Africa. At Peninsula and Parkville campuses there were more than double the numbers of female postgraduates to male postgraduates.

## Sex of postgraduates by campus, 2011

	Clayton	Caulfield	Peninsula	Gippsland	Parkville	Berwick	Sunway	South Africa	Total
Female	4983	3186	655	713	462	6	180	29	10214
Male	3043	2683	197	492	185	7	152	30	6789
<b>Total</b>	<b>8026</b>	<b>5869</b>	<b>852</b>	<b>1205</b>	<b>647</b>	<b>13</b>	<b>332</b>	<b>59</b>	<b>17003</b>

Source: Monash University Planning and Statistics, as at 7 June 2012

In 2011:

- 74% of male HDRs and 66% of female HDRs were enrolled full-time.
- 49% of male GPGs and 44% of female GPGs were enrolled full-time.
- 64% of the part-time postgraduate population at Monash was female.

### Sex of postgraduates by course type and attendance type, 2011

		Female	Male	Total
Higher degree by research	Full-time	1594	1523	3117
	Part-time	820	526	1346
Graduate/postgraduate	Full-time	3463	2324	5787
	Part-time	4337	2416	6753
<b>Total</b>		<b>10214</b>	<b>6789</b>	<b>17003</b>

Source: Monash University Planning and Statistics, as at 7 June 2011

There were more female HDRs than male in all faculties except Engineering, Information Technology and Science.

Of the 3,710 postgraduates in the Faculty of Medicine, Nursing and Health Sciences in 2011, 54% were female GPGs. Similarly, of the 2932 postgraduates enrolled in the Faculty of Education, 60% were female GPGs.

### Sex of postgraduates by course type and faculty, 2011

		Female	Male	Total
Art, Design and Architecture	HDR	186	124	310
	GPG	135	52	187
Arts	HDR	361	301	662
	GPG	690	318	1008
Business and Economics	HDR	199	182	381
	GPG	1973	1729	3702
Education	HDR	336	151	487
	GPG	1764	681	2445
Engineering	HDR	162	410	572
	GPG	63	297	360
Information Technology	HDR	62	139	201
	GPG	250	614	864
Law	HDR	58	47	105
	GPG	496	322	818
Medicine, Nursing and Health Sciences	HDR	738	373	1111
	GPG	2022	577	2599
Pharmacy and Pharmaceutical Sciences	HDR	77	64	141
	GPG	385	121	506
Science	HDR	221	250	471
	GPG	22	29	51
T&R	HDR	14	8	22
<b>Total</b>		<b>10214</b>	<b>6789</b>	<b>17003</b>

Source: Monash University Planning and Statistics, as at 7 June 2012

# Australian Aboriginal and Torres Strait Islander (ATSI) postgraduate enrolments

The number of Aboriginal and Torres Strait Islander postgraduates increased between 2009 and 2011. HDR numbers increased between 2009-10 then decreased slightly between 2010-11 while GPG numbers increased during the three year time period.

## ATSI postgraduates by campus, 2011, 2010 and 2009

Campus	Clayton	Caulfield	Peninsula	Gippsland	Parkville	Berwick	Sunway	South Africa	Total
<b>2011</b>									
Higher degree by research	8	7	2	0	1	0	0	0	<b>18</b>
Graduate postgraduate	16	6	2	7	0	0	0	0	<b>31</b>
<b>Total</b>	<b>24</b>	<b>13</b>	<b>4</b>	<b>7</b>	<b>1</b>	<b>0</b>	<b>0</b>	<b>0</b>	<b>49</b>
<b>2010</b>									
Higher degree by research	8	7	2	2	0	0	0	0	<b>19</b>
Graduate postgraduate	12	5	0	3	0	0	0	0	<b>20</b>
<b>Total</b>	<b>20</b>	<b>12</b>	<b>2</b>	<b>5</b>	<b>0</b>	<b>0</b>	<b>0</b>	<b>0</b>	<b>39</b>
<b>2009</b>									
Higher degree by research	7	6	0	3	0	0	0	0	<b>16</b>
Graduate postgraduate	6	8	1	2	0	0	0	0	<b>17</b>
<b>Total</b>	<b>13</b>	<b>14</b>	<b>1</b>	<b>5</b>	<b>0</b>	<b>0</b>	<b>0</b>	<b>0</b>	<b>33</b>

Source: Monash University Planning and Statistics, as at 15 June 2010, 18 July 2011 and 7 June 2012

More than 61% of the ATSI postgraduates in 2009, 2010 and 2011 were female.

## ATSI postgraduates by sex, 2011, 2010 and 2009

Sex	Female	Male	Total
2011	31	18	<b>49</b>
2010	24	15	<b>39</b>
2009	22	11	<b>33</b>

Source: Monash University Planning and Statistics, as at 15 June 2010, 18 July 2011 and 7 June 2012

More than 61% of the ATSI postgraduates in 2009, 2010 and 2011 were part-time students.

## ATSI postgraduates by attendance type, 2011, 2010 and 2009

	Full-time	Part-time	Total
2011	19	30	<b>49</b>
2010	12	27	<b>39</b>
2009	12	21	<b>33</b>

Source: Monash University Planning and Statistics, as at 15 June 2010, 18 July 2011 and 7 June 2012

In 2011, 15 of the 49 Indigenous postgraduates were enrolled in the Faculty of Education and 14 were enrolled in the Faculty of Medicine, Nursing and Health Sciences. Between 2009 and 2011, there were no Indigenous students enrolled in HDR or GPG degrees in the Faculty of Engineering.

#### ATSI postgraduates by faculty and course type, 2011, 2010 and 2009

Faculty		2011	2010	2009
Art, Design and Architecture	HDR	5	5	4
	GPG	1	1	0
Arts	HDR	2	3	3
	GPG	1	2	0
Business and Economics	HDR	0	0	0
	GPG	0	1	3
Education	HDR	6	6	5
	GPG	9	5	3
Engineering	HDR	0	0	0
	GPG	0	0	0
Information Technology	HDR	0	0	0
	GPG	2	1	4
Law	HDR	1	1	0
	GPG	5	3	3
Medicine, Nursing and Health Sciences	HDR	1	2	2
	GPG	13	7	3
Pharmacy and Pharmaceutical Sciences	HDR	1	0	0
	GPG	0	0	0
Science	HDR	2	2	2
	GPG	0	0	1
<b>Total</b>		<b>49</b>	<b>39</b>	<b>33</b>

Source: Monash University Planning and Statistics, as at 15 June 2010, 18 July 2011 and 7 June 2012

Between 2009 and 2011 the number of undergraduate ATSI students was highest in the Faculties of Arts, and Medicine, Nursing and Health Sciences.

#### ATSI undergraduates by faculty, 2011, 2010 and 2009

Faculty	2011	2010	2009
Art, Design and Architecture	4	3	2
Arts	36	33	29
Business and Economics	3	4	5
Education	8	10	12
Engineering	1	1	2
Information Technology	4	3	2
Law	6	5	7
Medicine, Nursing and Health Sciences	19	21	17
Pharmacy and Pharmaceutical Sciences	0	1	1
Science	11	10	7
<b>Total</b>	<b>92</b>	<b>91</b>	<b>84</b>

Source: Monash University Planning and Statistics, as at 15 June 2010, 18 July 2011 and 7 June 2012

## Funding source

Of the 4463 HDRs in 2011, 69% were supported by the Research Training Scheme or were domestic and fee-exempt. Thirty one percent of the HDRs in 2011 were international fee-paying students.

Thirty-three percent of GPGs were international fee-paying in 2011. While there were 8463 domestic GPGs, 46% held Commonwealth Supported Places, 29% were fee-paying students assisted with FEE-HELP, and 24% were fee-paying without FEE-HELP.

### Funding source by campus and by course type, 2011

Payment method	Clayton	Caulfield	Peninsula	Gippsland	Parkville	Berwick	Sunway	South Africa	Total
<b>Higher degree by research</b>									
Research Training Scheme	1969	549	120	99	95	9			2841
International fee-paying	871	170	24	60	39	4	205	10	1383
Domestic fee-exempt	169	48	6	7	7				237
Domestic fee-paying, no FEE-HELP	1						1		2
<b>HDR Total</b>	<b>3010</b>	<b>767</b>	<b>150</b>	<b>166</b>	<b>141</b>	<b>13</b>	<b>206</b>	<b>10</b>	<b>4463</b>
<b>Graduate postgraduate</b>									
CSP	1958	379	427	799	367				3930
International fee-paying	876	2769	138	108	11		126	49	4077
Domestic fee-paying with FEE-HELP	1117	1205	22	82	47				2473
Domestic fee-paying, no FEE-HELP	1065	749	115	50	81				2060
<b>GPG Total</b>	<b>5016</b>	<b>5102</b>	<b>702</b>	<b>1039</b>	<b>506</b>		<b>126</b>	<b>49</b>	<b>12540</b>
<b>Total</b>	<b>8026</b>	<b>5869</b>	<b>852</b>	<b>1205</b>	<b>647</b>	<b>13</b>	<b>332</b>	<b>59</b>	<b>17003</b>

Source: Monash University Planning and Statistics, as at 7 June 2012

# Attendance type

In 2011:

- 52% of postgraduates were enrolled full-time
- 48% of postgraduates were enrolled part-time
- 70% of HDRs were enrolled full-time
- 30% of HDRs were enrolled part-time
- 46% of GPGs were enrolled full-time
- 54% of GPGs were enrolled part-time

## Attendance type by course type, 2011, 2010 and 2009

	Full-time	Part-time	Total
<b>2011</b>			
Higher degree by research	3117	1346	4463
Graduate/postgraduate	5787	6753	12540
<b>Total</b>	<b>8904</b>	<b>8099</b>	<b>17003</b>
<b>2010</b>			
Higher degree by research	2870	1341	4211
Graduate/postgraduate	5774	7037	12811
<b>Total</b>	<b>8644</b>	<b>8378</b>	<b>17022</b>
<b>2009</b>			
Higher degree by research	2616	1317	3933
Graduate/postgraduate	5677	6928	12605
<b>Total</b>	<b>8293</b>	<b>8245</b>	<b>16538</b>

Source: Monash University Planning and Statistics, as at 15 June 2010, 18 July 2011 and 7 June 2012

In 2011:

- 52% of postgraduates at Clayton were enrolled full-time
- 48% of postgraduates at Clayton were enrolled part-time
- 63% of postgraduates at Caulfield were enrolled full-time
- 37% of postgraduates at Caulfield were enrolled part-time

Numbers of part-time postgraduates were substantially higher than full-time postgraduates at:

- Peninsula with 59% of the postgraduate population studying part-time
- Gippsland with 80% of the postgraduate population studying part-time
- Parkville with 80% of the postgraduate population studying part-time

#### Attendance type by campus 2011, 2010 and 2009

	Clayton	Caulfield	Peninsula	Gippsland	Parkville	Berwick	Sunway	South Africa	Total
<b>2011</b>									
Full-time	4178	3696	353	243	132	11	264	27	8904
Part-time	3848	2173	499	962	515	2	68	32	8099
<b>Total</b>	<b>8026</b>	<b>5869</b>	<b>852</b>	<b>1205</b>	<b>647</b>	<b>13</b>	<b>332</b>	<b>59</b>	<b>17003</b>
<b>2010</b>									
Full-time	3925	3777	348	269	117	13	189	6	8644
Part-time	3918	2326	520	1026	501	4	61	22	8378
<b>Total</b>	<b>7843</b>	<b>6103</b>	<b>868</b>	<b>1295</b>	<b>618</b>	<b>19</b>	<b>183</b>	<b>28</b>	<b>17022</b>
<b>2009</b>									
Full-time	3671	3798	310	251	110	13	140	0	8293
Part-time	3851	2398	462	1074	410	6	43	1	8245
<b>Total</b>	<b>7522</b>	<b>6196</b>	<b>772</b>	<b>1325</b>	<b>520</b>	<b>19</b>	<b>183</b>	<b>1</b>	<b>16538</b>

Source: Monash University Planning and Statistics, as at 15 June 2010, 18 July 2011 and 7 June 2012



# Attendance mode

In 2011:

- 67% of postgraduates were enrolled via internal mode
- 25% of postgraduates were enrolled via external mode
- 8% of postgraduates were enrolled via multi-mode
- 93% of HDRs were enrolled via internal mode
- 6% of HDRs were enrolled via external mode
- 1% of HDRs were enrolled via multi-mode
- 58% of GPGs were enrolled via internal mode
- 32% of GPGs were enrolled via external mode
- 10% of GPGs were enrolled via multi-mode

## Attendance mode by course type and by year 2011, 2010 and 2009

	Internal	External	Multi-modal	Total
<b>2011</b>				
Higher degree by research	4153	260	50	4463
Graduate/postgraduate	7248	4040	1252	12540
<b>Total</b>	<b>11401</b>	<b>4300</b>	<b>1302</b>	<b>17003</b>
<b>2010</b>				
Higher degree by research	3858	314	39	4211
Graduate/postgraduate	7427	4412	972	12811
<b>Total</b>	<b>11285</b>	<b>4726</b>	<b>1011</b>	<b>17022</b>
<b>2009</b>				
Higher degree by research	3587	291	55	3933
Graduate/postgraduate	7644	4201	760	12605
<b>Total</b>	<b>11231</b>	<b>4492</b>	<b>815</b>	<b>16538</b>

Source: Monash University Planning and Statistics, as at 15 June 2010, 18 July 2011 and 7 June 2012

Between 2009 and 2011, internal and multi-modal postgraduate enrolments increased while external enrolments decreased between 2010-11.

In 2011:

- 72% of postgraduates at Gippsland were enrolled via external mode
- 44% of postgraduates at Parkville were enrolled via external mode
- 33% of postgraduates at Peninsula were enrolled via external mode
- 28% of postgraduates at Clayton were enrolled via external mode
- 10% of postgraduates at Caulfield were enrolled via external mode

**Attendance mode by campus and by year 2011, 2010 and 2009**

	Clayton	Caulfield	Peninsula	Gippsland	Parkville	Berwick	Sunway	South Africa	Total
<b>2011</b>									
Internal	5184	5053	418	217	143	13	317	56	11401
External	2261	616	280	859	283	0	0	1	4300
Multi-modal	581	200	154	129	221	0	15	2	1302
<b>Total</b>	<b>8026</b>	<b>5869</b>	<b>852</b>	<b>1205</b>	<b>647</b>	<b>13</b>	<b>332</b>	<b>59</b>	<b>17003</b>
<b>2010</b>									
Internal	5028	5222	414	200	127	17	249	28	11285
External	2306	681	325	943	471	0	0	0	4726
Multi-modal	509	200	129	152	20	0	1	0	1011
<b>Total</b>	<b>7843</b>	<b>6103</b>	<b>868</b>	<b>1295</b>	<b>618</b>	<b>17</b>	<b>250</b>	<b>28</b>	<b>17022</b>
<b>2009</b>									
Internal	4991	5357	352	212	116	19	183	1	11 231
External	2196	649	282	981	384	0	0	0	4 492
Multi-modal	335	190	138	132	20	0	0	0	815
<b>Total</b>	<b>7522</b>	<b>6196</b>	<b>772</b>	<b>1325</b>	<b>520</b>	<b>19</b>	<b>183</b>	<b>1</b>	<b>16538</b>

Source: Monash University Planning and Statistics, as at 15 June 2010, 18 July 2011 and 7 June 2012

# Student course attempt location

## Student course attempt location, 2011

<b>Law Faculty</b>	
City location	816
<b>Law Total</b>	<b>816</b>
<b>Medicine, Nursing and Health Sciences Faculty</b>	
Alfred Hospital	133
Baker Heart Research Institute - Alfred Hospital	42
Box Hill Hospital	9
Macfarlane Burnet Inst For Med Res & Public Health Alfred	9
Moe (School Of Rural Health Only)	18
Monash Medical Centre - Clayton	80
Monash Medical School - Alfred	429
Murdoch Children's Research Institute	1
Notting Hill	92
Peter MacCallum Cancer Institute - East Melbourne	3
Prince Henry's Institute- MMC Clayton	11
Southbank (Department of Forensic Medicine Only)	3
<b>Medicine, Nursing and Health Sciences Total</b>	<b>830</b>
<b>Grand Total</b>	<b>1683</b>

Source: Monash University Planning and Statistics, as at 7 June 2012

The table above lists course attempt locations excluding the eight main campuses and any externally enrolled postgraduates. The remaining locations each have postgraduates physically based at the premises for the duration of their courses.

- 88% of the postgraduates enrolled in the Faculty of Law were based in the city location
- 22% of the postgraduates enrolled in the Faculty of Medicine, Nursing and Health Sciences were based at various hospitals, research centres and other locations as described above.

# Equity groups

In 2011:

- 438 or 2.6% of postgraduates identified themselves as having a disability
- 1157 or 10% of postgraduates were from an area of low socio-economic status

## Equity group by faculty, 2011

Faculty	Disabled	Low SES
Art, Design and Architecture	25	25
Arts	62	94
Business and Economics	55	130
Education	75	260
Engineering	14	91
Information Technology	19	42
Law	46	56
Medicine, Nursing and Health Sciences	110	349
Pharmacy and Pharmaceutical Sciences	12	78
Science	19	31
T & R	1	1
<b>Total</b>	<b>438</b>	<b>1157</b>

Source: Monash University Planning and Statistics, as at 7 June 2012

- The largest number of postgraduates with a disability were enrolled through the Faculty of Medicine, Nursing and Health Sciences (110) however the greatest proportion were enrolled in the Faculties of Law (5%) and Art, Design and Architecture (5%).
- The largest number of postgraduates from an area of low socio-economic status, were enrolled in the Faculty of Medicine, Nursing and Health Sciences (349) however the greatest proportion were enrolled in the Faculty of Pharmacy and Pharmaceutical Sciences (12%).

## Equity group by campus, 2011

Campus	Disabled	Low SES
Clayton	244	580
Caulfield	120	208
Gippsland	37	196
Peninsula	18	93
Parkville	12	78
Berwick	2	2
Sunway	5	
<b>Total</b>	<b>438</b>	<b>1157</b>

Source: Monash University Planning and Statistics, as at 7 June 2012

- The largest number of postgraduates with a disability were on the Clayton and Caulfield campuses however the greatest proportion, 3% were enrolled via the Gippsland campus.
- 16% of the domestic postgraduate population at Gippsland were from an area of low socio-economic status.

### Equity group by sex, 2011

<b>Sex</b>	<b>Disabled</b>	<b>Low SES</b>
Female	278	726
Male	160	431
<b>Total</b>	<b>438</b>	<b>1157</b>

Source: Monash University Planning and Statistics, as at 7 June 2012

- 64% of postgraduates who identified themselves as having a disability were female.
- 63% of postgraduates from an area of low socio-economic status were female.